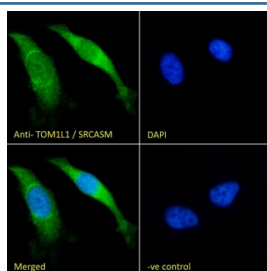


## TOM1L1 Antibody (R33939)

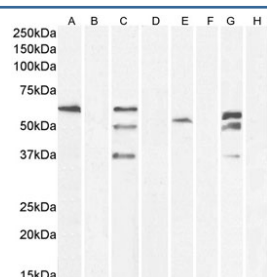
Catalog No.	Formulation	Size
R33939-100UG	0.5 mg/ml in 1X TBS, pH7.3, with 0.5% BSA (US sourced) and 0.02% sodium azide	100 ug

[Bulk quote request](#)

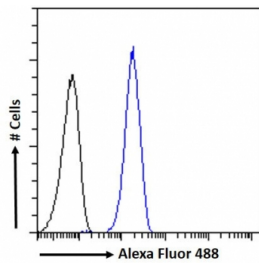
Availability	1-3 business days
Species Reactivity	Human
Format	Antigen affinity purified
Clonality	Polyclonal (goat origin)
Isotype	Goat Ig
Purity	Antigen affinity
Gene ID	10040
Applications	Western Blot : 0.3-1ug/ml Immunofluorescence : 10ug/ml Flow Cytometry : 10ug/ml ELISA (peptide) LOD : 1:64000
Limitations	This TOM1L1 antibody is available for research use only.



IF/ICC staining of fixed and permeabilized human HeLa cells with TOM1L1 antibody (green) at 10ug/ml and DAPI nuclear stain (blue).



Western blot testing of human A) A431 cell lysate, B) A431 cell lysate + immunizing peptide, C) A431 cell lysate, D) A431 cell lysate + immunizing peptide, E) HEK293 cell lysate, F) HEK293 cell lysate + immunizing peptide, G) HEL cell lysate, H) HEL cell lysate + immunizing peptide with TOM1L1 antibody at 0.3ug/ml. Predicted molecular weight: ~53kDa.



FACS testing of fixed and permeabilized human HeLa cells with TOM1L1 antibody (blue) at 10ug/ml and naive goat Ig (black).

## Description

Additional name(s) for this target protein: Target of myb1-like 1; SRCASM

## Application Notes

Optimal dilution of the TOM1L1 antibody should be determined by the researcher.

## Immunogen

Amino acids EQNKNQKEATNTTSE were used as the immunogen for this TOM1L1 antibody.

## Storage

Aliquot and store the TOM1L1 antibody at -20oC.