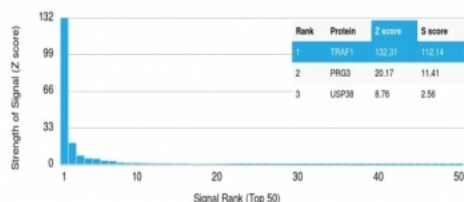


TNFR-Associated Factor 1 Antibody / TRAF1 [clone TRAF1/3365] (V5594)

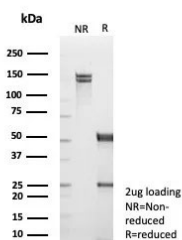
Catalog No.	Formulation	Size
V5594-100UG	0.2 mg/ml in 1X PBS with 0.1 mg/ml BSA (US sourced), 0.05% sodium azide	100 ug
V5594-20UG	0.2 mg/ml in 1X PBS with 0.1 mg/ml BSA (US sourced), 0.05% sodium azide	20 ug
V5594SAF-100UG	1 mg/ml in 1X PBS; BSA free, sodium azide free	100 ug

[Bulk quote request](#)

Availability	1-3 business days
Species Reactivity	Human
Format	Purified
Clonality	Monoclonal (mouse origin)
Isotype	Mouse IgG1, kappa
Clone Name	TRAF1/3365
Purity	Protein A/G affinity
UniProt	Q13077
Localization	Cytoplasm
Applications	ELISA :
Limitations	This TNFR-Associated Factor 1 antibody is available for research use only.



Analysis of HuProt(TM) microarray containing more than 19,000 full-length human proteins using TNFR-Associated Factor 1 antibody (clone TRAF1/3365). These results demonstrate the foremost specificity of the TRAF1/3365 mAb. Z- and S- Score: The Z-score represents the strength of a signal that a monoclonal antibody (clone MAb) (in combination with a fluorescently-tagged anti-IgG secondary antibody) produces when binding to a particular protein on the HuProt(TM) array. Z-scores are described in units of standard deviations (SD \pm 3 σ) above the mean value of all signals generated on that array. If targets on HuProt(TM) are arranged in descending order of the Z-score, the S-score is the difference (also in units of SD \pm 3 σ) between the Z-score. S-score therefore represents the relative target specificity of a MAb to its intended target. A MAb is considered to specific to its intended target, if the MAb has an S-score of at least 2.5. For example, if a MAb binds to protein X with a Z-score of 43 and to protein Y with a Z-score of 14, then the S-score for the binding of that MAb to protein X is equal to 29.



SDS-PAGE analysis of purified, BSA-free TNFR-Associated Factor 1 antibody (clone TRAF1/3365) as confirmation of integrity and purity.

Description

This MAb recognizes a protein of 52kDa, which is identified as TNFR1 (TNFR-associated factor 1). CD30-positive lymphoproliferations of the skin comprise 30% of all primary cutaneous T-cell lymphomas (CTCLs). Besides borderline cases this group includes lymphomatoid papulosis (LyP) and primary cutaneous anaplastic large T-cell lymphoma (cALCL). Although the two entities overlap clinically, histopathologically, immunopathologically and genetically, they differ considerably in their prognosis. In particular, common feature of both cases is histologically the presence of atypical lymphoid CD30-positive T blasts and genetically a clonal T-cell-receptor rearrangement. However, both cases differ considerably in their clinical course: Lesions of LyP regress spontaneously, whereas those of cALCL persist and may progress and spread. Moreover, LyP patients do not benefit from an aggressive radio- and/or chemotherapeutic approach, in contrast to patients with cALCL. Besides, LyP and cALCL differ strongly in the expression of TRAF1 (tumor necrosis factor receptor (TNFR)-associated factor 1), a component of TNFR signaling: Whereas tumor cells of most LyP cases (ca. 84%) show a strong TRAF1 expression, tumor cells of cALCL reveal TRAF1 expression in only a few cases (ca. 7%). Antibody to TRAF1 is highly useful for the differentiation of LyP and cALCL in patients with cutaneous CD30-positive lymphoproliferations.

Application Notes

Optimal dilution of the TNFR-Associated Factor 1 antibody should be determined by the researcher.

Immunogen

A recombinant fragment of human TRAF1 protein (within amino acids 73-219) was used as the immunogen for the TNFR-Associated Factor 1 antibody.

Storage

Aliquot the TNFR-Associated Factor 1 antibody and store frozen at -20oC or colder. Avoid repeated freeze-thaw cycles.