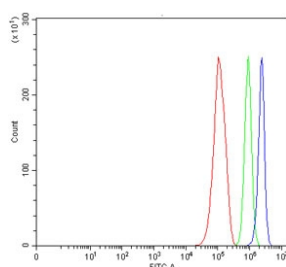


TMEM52B Antibody / Transmembrane protein 52B (RQ7501)

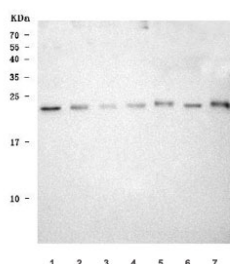
Catalog No.	Formulation	Size
RQ7501	0.5mg/ml if reconstituted with 0.2ml sterile DI water	100 ug

Bulk quote request

Availability	1-3 business days
Species Reactivity	Human, Monkey, Mouse, Rat
Format	Antigen affinity purified
Clonality	Polyclonal (rabbit origin)
Isotype	Rabbit IgG
Purity	Antigen affinity purified
Buffer	Lyophilized from 1X PBS with 2% Trehalose
UniProt	Q4KMG9
Applications	Western Blot : 0.5-1ug/ml Flow Cytometry : 1-3ug/million cells Direct ELISA : 0.1-0.5ug/ml
Limitations	This TMEM52B antibody is available for research use only.



Flow cytometry testing of human RT4 cells with TMEM52B antibody at 1ug/million cells (blocked with goat sera); Red=cells alone, Green=isotype control, Blue= TMEM52B antibody.



Western blot testing of 1) human 293T, 2) monkey COS-7, 3) human SiHa, 4) rat NRK, 5) mouse kidney and 6) mouse HBZY-1 cell lysate with TMEM52B antibody. Predicted molecular weight ~20 kDa.

Description

TMEM52B (Transmembrane Protein 52B, also known as C12orf59) is a Protein Coding gene. The TMEM52B gene, located on 12p13.2, is conserved in chimpanzee, dog, cow, mouse, rat, chicken, and frog. 2 alternatively spliced human isoforms have been reported. The 183-amino acid protein has a reported mass of 20,002 daltons. The cellular localization is predicted to be membrane-associated. C12orf59 might act as a potential oncogenic protein in gastric cancer (GC). Researchers propose that the decreased C12orf59 expression status is a prognostic biomarker of ccRCC and cooperates with the loss of von Hippel-Lindau (VHL) all the while promoting renal carcinogenesis. 192 organisms have orthologs with human gene TMEM52B.

Application Notes

Optimal dilution of the TMEM52B antibody should be determined by the researcher.

Immunogen

E. coli-derived recombinant human protein (amino acids T22-N183) was used as the immunogen for the TMEM52B antibody.

Storage

After reconstitution, the TMEM52B antibody can be stored for up to one month at 4oC. For long-term, aliquot and store at -20oC. Avoid repeated freezing and thawing.