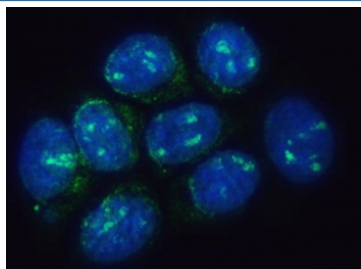


TMEM50B Antibody / Transmembrane protein 50B / C21orf4 (RQ7826)

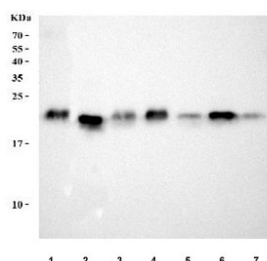
Catalog No.	Formulation	Size
RQ7826	0.5mg/ml if reconstituted with 0.2ml sterile DI water	100 ug

Bulk quote request

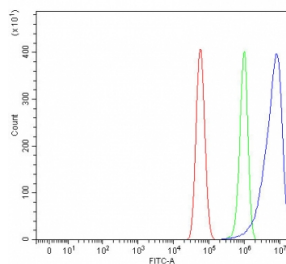
Availability	1-3 business days
Species Reactivity	Human, Mouse, Rat
Format	Antigen affinity purified
Clonality	Polyclonal (rabbit origin)
Isotype	Rabbit IgG
Purity	Antigen affinity purified
Buffer	Lyophilized from 1X PBS with 2% Trehalose
UniProt	P56557
Localization	Nucleoli fibrillar center, ER
Applications	Western Blot : 0.5-1ug/ml Immunofluorescence : 5ug/ml Flow Cytometry : 1-3ug/million cells
Limitations	This TMEM50B antibody is available for research use only.



Immunofluorescent staining of FFPE human MCF7 cells with TMEM50B antibody (green) and DAPI nuclear stain (blue). HIER: steam section in pH6 citrate buffer for 20 min.



Western blot testing of 1) human T-47D, 2) human HEL, 3) human ThP-1, 4) rat testis, 5) rat lung, 6) mouse testis and 7) mouse lung tissue lysate with TMEM50B antibody. Predicted molecular weight ~18 kDa.



Flow cytometry testing of human U-87 MG cells with TMEM50B antibody at 1ug/million cells (blocked with goat sera); Red=cells alone, Green=isotype control, Blue= TMEM50B antibody.

Description

Predicted to be involved in late endosome to vacuole transport via multivesicular body sorting pathway. Located in endoplasmic reticulum.

Application Notes

Optimal dilution of the TMEM50B antibody should be determined by the researcher.

Immunogen

Amino acids GFLDNFRWPECECIDWSERR from the human protein were used as the immunogen for the TMEM50B antibody.

Storage

After reconstitution, the TMEM50B antibody can be stored for up to one month at 4oC. For long-term, aliquot and store at -20oC. Avoid repeated freezing and thawing.