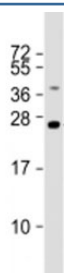


TMED4 Antibody (F53824)

Catalog No.	Formulation	Size
F53824-0.2ML	In 1X PBS, pH 7.4, with 0.09% sodium azide	0.2 ml
F53824-0.05ML	In 1X PBS, pH 7.4, with 0.09% sodium azide	0.05 ml

[Bulk quote request](#)

Availability	1-3 business days
Species Reactivity	Human
Predicted Reactivity	Mouse, Rat, Bovine
Format	Antigen affinity purified
Clonality	Polyclonal (rabbit origin)
Isotype	Rabbit Ig
Purity	Antigen affinity
UniProt	Q7Z7H5
Applications	Western Blot : 1:1000-2000
Limitations	This TMED4 antibody is available for research use only.



Western blot testing of human liver lysate with TMED4 antibody at 1:2000. Predicted molecular weight: 26 kDa.

Description

Transmembrane emp24 domain-containing protein 4 is involved in vesicular protein trafficking, mainly in the early secretory pathway. targeting. Involved in the maintenance of the Golgi apparatus. Appears to play a role in the biosynthesis of secreted cargo including processing. Involved in endoplasmic reticulum stress response. May play a role in the regulation of heat-shock response and apoptosis (By similarity).

Application Notes

Titration of the TMED4 antibody may be required due to differences in protocols and secondary/substrate sensitivity.

Immunogen

A portion of amino acids 195-225 from the human protein was used as the immunogen for the TMED4 antibody.

Storage

Aliquot the TMED4 antibody and store frozen at -20oC or colder. Avoid repeated freeze-thaw cycles.