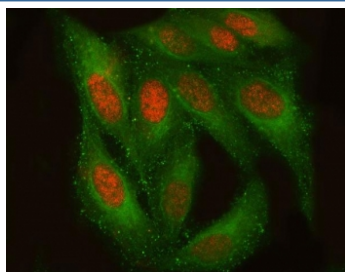


TM2D3 Antibody / BLP2 (RQ8023)

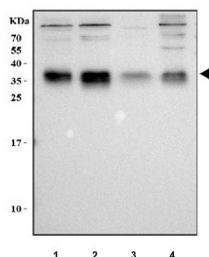
| Catalog No. | Formulation | Size |
|-------------|---|--------|
| RQ8023 | 0.5mg/ml if reconstituted with 0.2ml sterile DI water | 100 ug |

Bulk quote request

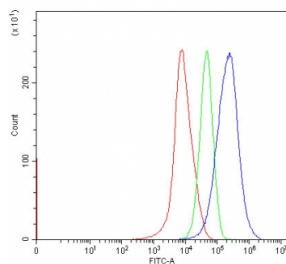
| | |
|---------------------------|---|
| Availability | 1-3 business days |
| Species Reactivity | Human |
| Format | Antigen affinity purified |
| Clonality | Polyclonal (rabbit origin) |
| Isotype | Rabbit IgG |
| Purity | Antigen affinity purified |
| Buffer | Lyophilized from 1X PBS with 2% Trehalose |
| UniProt | Q9BRN9 |
| Applications | Western Blot : 0.5-1ug/ml Immunofluorescence : 5ug/ml Flow Cytometry : 1-3ug/million cells Direct ELISA : 0.1-0.5ug/ml |
| Limitations | This TM2D3 antibody is available for research use only. |



Immunofluorescent staining of FFPE human HeLa cells with TM2D3 antibody (green) and DAPI nuclear stain (blue). HIER: steam section in pH6 citrate buffer for 20 min.



Western blot testing of human 1) 293T, 2) RT4, 3) ThP-1 and 4) A549 cell lysate with TM2D3 antibody. Predicted molecular weight ~27 kDa but may be observed at higher molecular weights due to glycosylation.



Flow cytometry testing of fixed and permeabilized human HepG2 cells with TM2D3 antibody at 1ug/million cells (blocked with goat sera); Red=cells alone, Green=isotype control, Blue= TM2D3 antibody.

Description

The protein encoded by this gene contains a structural module related to that of the seven transmembrane domain G protein-coupled receptor superfamily. This protein has sequence and structural similarities to the beta-amyloid binding protein (BBP), but, unlike BBP, it does not regulate a response to beta-amyloid peptide. This protein may have regulatory roles in cell death or proliferation signal cascades. Several alternatively spliced transcript variants of this gene are described but the full length nature of some variants has not been determined. Multiple polyadenylation sites have been found in this gene.

Application Notes

Optimal dilution of the TM2D3 antibody should be determined by the researcher.

Immunogen

E. coli-derived recombinant human protein (amino acids E31-N179) was used as the immunogen for the TM2D3 antibody.

Storage

After reconstitution, the TM2D3 antibody can be stored for up to one month at 4oC. For long-term, aliquot and store at -20oC. Avoid repeated freezing and thawing.