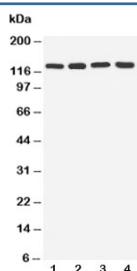


TLR7 Antibody / Toll-like Receptor 7 (R30823)

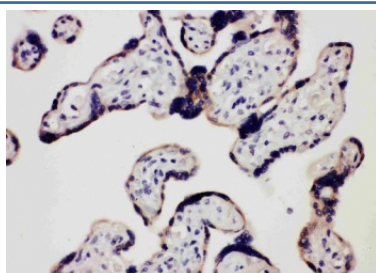
Catalog No.	Formulation	Size
R30823	0.5mg/ml if reconstituted with 0.2ml sterile DI water	100 ug

Bulk quote request

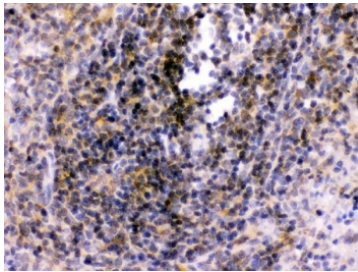
Availability	1-3 business days
Species Reactivity	Human, Rat, Mouse
Format	Antigen affinity purified
Clonality	Polyclonal (rabbit origin)
Isotype	Rabbit Ig
Purity	Antigen affinity
Buffer	Lyophilized from 1X PBS with 2.5% BSA and 0.025% sodium azide/thimerosal
UniProt	Q9NYK1
Localization	Cytoplasmic
Applications	Western Blot : 0.5-1ug/ml Immunohistochemistry (FFPE) : 0.5-1ug/ml
Limitations	This TLR7 antibody is available for research use only.



Western blot testing of TLR7 antibody and lysate from lane 1: rat spleen; 2: rat liver; 3: human U87 cells; 4: human A549 cells. Expected/observed molecular weight ~121 kDa.



IHC staining of FFPE human placental tissue with TLR7 antibody. HIER: boil tissue sections in pH6 citrate buffer for 20 min and allow to cool before testing.



IHC staining of FFPE rat spleen tissue with TLR7 antibody. HIER: boil tissue sections in pH6 citrate buffer for 20 min and allow to cool before testing.

Description

Toll-like receptor 7 is protein that in humans is encoded by the TLR7 gene. Orthologs are found in mammals and birds. It is a member of the Toll-like receptor family which plays a fundamental role in pathogen recognition and activation of innate immunity. TLRs are highly conserved from *Drosophila* to humans and share structural and functional similarities. They recognize pathogen-associated molecular patterns (PAMPs) that are expressed on infectious agents, and mediate the production of cytokines necessary for the development of effective immunity. The various TLRs exhibit different patterns of expression. This gene is predominantly expressed in lung, placenta, and spleen, and lies in close proximity to another family member, TLR8, on human chromosome X. TLR7 recognises single stranded RNA in endosomes, which is a common feature of viral genomes which are internalised by macrophages.

Application Notes

The stated application concentrations are suggested starting points. Titration of the TLR7 antibody may be required due to differences in protocols and secondary/substrate sensitivity.

Immunogen

An amino acid sequence from the C-terminus of human TLR7 (QAHPYFWQCLKNALATDNH) was used as the immunogen for this TLR7 antibody.

Storage

After reconstitution, the TLR7 antibody can be stored for up to one month at 4°C. For long-term, aliquot and store at -20°C. Avoid repeated freezing and thawing.

Alternate Names

Toll-like Receptor 7