

TLR7 Antibody (R32339)

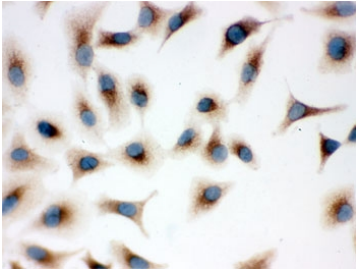
Catalog No.	Formulation	Size
R32339	0.5mg/ml if reconstituted with 0.2ml sterile DI water	100 ug

Bulk quote request

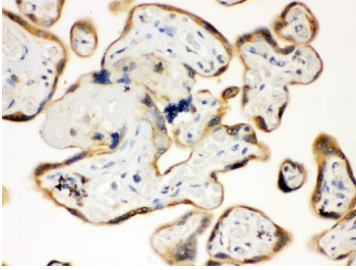
Availability	1-3 business days
Species Reactivity	Human, Mouse, Rat
Format	Antigen affinity purified
Clonality	Polyclonal (rabbit origin)
Isotype	Rabbit IgG
Purity	Antigen affinity
Buffer	Lyophilized from 1X PBS with 2.5% BSA and 0.025% sodium azide
UniProt	Q9NYK1
Localization	Cytoplasmic
Applications	Western Blot : 0.1-0.5ug/ml Immunocytochemistry : 0.5-1ug/ml IHC (Frozen) : 0.5-1ug/ml IHC (FFPE) : 0.5-1ug/ml Flow Cytometry : 1-3ug/10 ⁶ cells
Limitations	This TLR7 antibody is available for research use only.



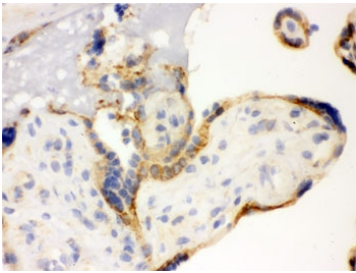
Western blot testing of 1) MCF7, 2) COLO320 and 3) Jurkat lysate with TLR7 antibody.
Expected/observed molecular weight ~121 kDa.



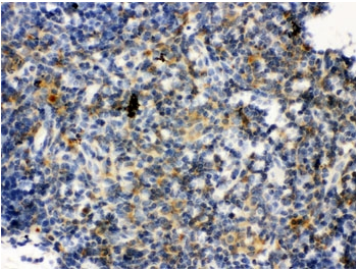
ICC testing of A549 cells with TLR7 antibody.



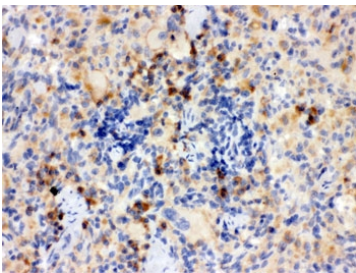
IHC testing of FFPE human placenta with TLR7 antibody. HIER: Boil the paraffin sections in pH 6, 10mM citrate buffer for 20 minutes and allow to cool prior to staining.



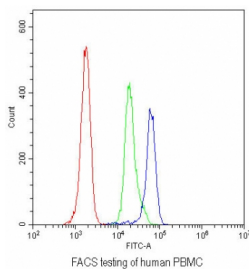
IHC testing of frozen human placenta with TLR7 antibody.



IHC testing of FFPE mouse thymus with TLR7 antibody. HIER: Boil the paraffin sections in pH 6, 10mM citrate buffer for 20 minutes and allow to cool prior to staining.



IHC testing of FFPE rat thymus with TLR7 antibody. HIER: Boil the paraffin sections in pH 6, 10mM citrate buffer for 20 minutes and allow to cool prior to staining.



Flow cytometry testing of human PBMC with TLR7 antibody at 1ug/10⁶ cells (blocked with goat sera); Red=cells alone, Green=isotype control, Blue= TLR7 antibody.

Description

TLR7 (Toll-like receptor 7) is protein that in humans is encoded by the TLR7 gene. Orthologs are found in mammals and birds. TLR7 is a member of the Toll-like receptor (TLR) family which plays a fundamental role in pathogen recognition and activation of innate immunity. TLRs are highly conserved from *Drosophila* to humans and share structural and functional similarities. They recognize pathogen-associated molecular patterns (PAMPs) that are expressed on infectious agents, and mediate the production of cytokines necessary for the development of effective immunity. The various TLRs exhibit different patterns of expression. This gene is predominantly expressed in lung, placenta, and spleen, and lies in close proximity to another family member, TLR8, on human chromosome X. TLR7 recognises single stranded RNA in endosomes, which is a common feature of viral genomes which are internalised by macrophages.

Application Notes

Optimal dilution of the TLR7 antibody should be determined by the researcher.

Immunogen

Amino acids QAHPYFWQCLKNALATDNHVAYSQVFKE of human TLR7 were used as the immunogen for the TLR7 antibody.

Storage

After reconstitution, the TLR7 antibody can be stored for up to one month at 4°C. For long-term, aliquot and store at -20°C. Avoid repeated freezing and thawing.