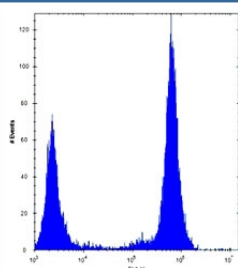


TLR4 Antibody (F51856)

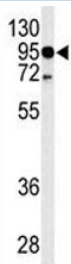
Catalog No.	Formulation	Size
F51856-0.4ML	In 1X PBS, pH 7.4, with 0.09% sodium azide	0.4 ml
F51856-0.08ML	In 1X PBS, pH 7.4, with 0.09% sodium azide	0.08 ml

[Bulk quote request](#)

Availability	1-3 business days
Species Reactivity	Human
Predicted Reactivity	Bovine, Pig, Hamster
Format	Antigen affinity purified
Clonality	Polyclonal (rabbit origin)
Isotype	Rabbit Ig
Purity	Antigen affinity
UniProt	O00206
Applications	Western Blot : 1:1000 Flow Cytometry : 1:10-1:50
Limitations	This TLR4 antibody is available for research use only.



TLR4 antibody flow cytometric analysis of U251 cells (right histogram) compared to a negative control (left histogram). FITC-conjugated goat-anti-rabbit secondary Ab was used for the analysis.



Western blot analysis of TLR4 antibody and HL-60 lysate.

Description

TLR4 is a member of the Toll-like receptor (TLR) family which plays a fundamental role in pathogen recognition and activation of innate immunity. TLRs are highly conserved from *Drosophila* to humans and share structural and functional similarities. They recognize pathogen-associated molecular patterns (PAMPs) that are expressed on infectious agents, and mediate the production of cytokines necessary for the development of effective immunity. The various TLRs exhibit different patterns of expression. This receptor is most abundantly expressed in placenta, and in myelomonocytic subpopulation of the leukocytes. It has been implicated in signal transduction events induced by lipopolysaccharide (LPS) found in most gram-negative bacteria.

Application Notes

Titration of the TLR4 antibody may be required due to differences in protocols and secondary/substrate sensitivity.

Immunogen

A portion of amino acids 669-698 from the human protein was used as the immunogen for this TLR4 antibody.

Storage

Aliquot the TLR4 antibody and store frozen at -20°C or colder. Avoid repeated freeze-thaw cycles.