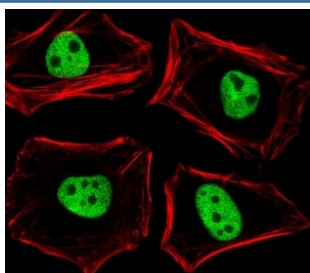


## TLE1 Antibody / Transducin-like enhancer protein 1 (F52972)

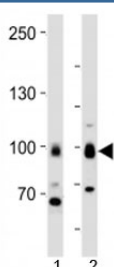
Catalog No.	Formulation	Size
F52972-0.4ML	In 1X PBS, pH 7.4, with 0.09% sodium azide	0.4 ml
F52972-0.08ML	In 1X PBS, pH 7.4, with 0.09% sodium azide	0.08 ml

**Bulk quote request**

<b>Availability</b>	1-3 business days
<b>Species Reactivity</b>	Human
<b>Format</b>	Antigen affinity purified
<b>Clonality</b>	Polyclonal (rabbit origin)
<b>Isotype</b>	Rabbit Ig
<b>Purity</b>	Antigen affinity
<b>UniProt</b>	Q04724
<b>Applications</b>	Immunofluorescence : 1:25 Western Blot : 1:1000
<b>Limitations</b>	This TLE1 antibody is available for research use only.



Fluorescent image of HeLa cells stained with TLE1 antibody diluted at 1:25 dilution. An Alexa Fluor 488-conjugated goat anti-rabbit IgG was used as the secondary Ab (green). Cytoplasmic actin was counterstained with Alexa Fluor 555 conjugated with Phalloidin (red).



Western blot analysis of lysate from 1) MCF-7 cells and 2) human brain tissue using TLE1 antibody at 1:1000.

## Description

Transcriptional corepressor that binds to a number of transcription factors. Inhibits NF-kappa-B-regulated gene expression. Inhibits the transcriptional activation mediated by FOXA2, and by CTNNB1 and TCF family members in Wnt signaling. The effects of full-length TLE family members may be modulated by association with dominant-negative AES. Unusual function as coactivator for ESRRG.

## Application Notes

Titration of the TLE1 antibody may be required due to differences in protocols and secondary/substrate sensitivity.

## Immunogen

This TLE1 antibody was produced from a rabbit immunized with a KLH conjugated synthetic peptide between 187-221 amino acids from the N-terminal region of human TLE1.

## Storage

Aliquot the TLE1 antibody and store frozen at -20oC or colder. Avoid repeated freeze-thaw cycles.