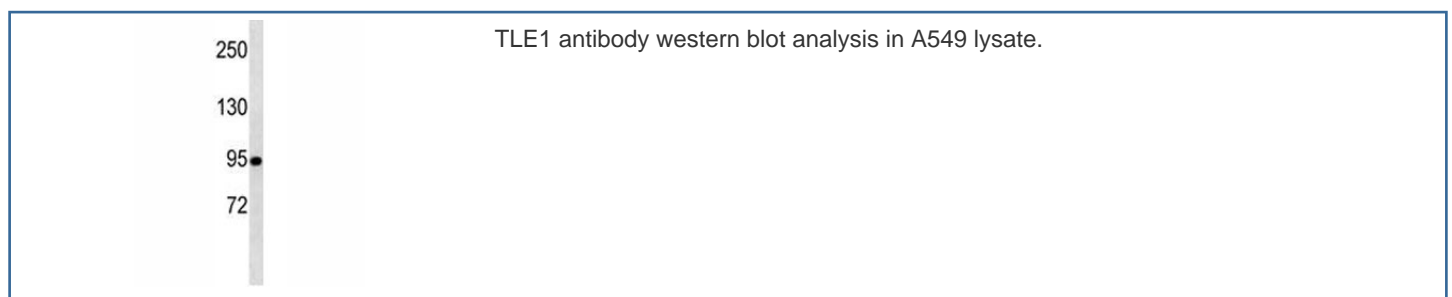


TLE1 Antibody / Transducin-like enhancer protein 1 [clone 381CT18.5.1] (F40324)

Catalog No.	Formulation	Size
F40324-0.4ML	In 1X PBS, pH 7.4, with 0.09% sodium azide	0.4 ml
F40324-0.08ML	In 1X PBS, pH 7.4, with 0.09% sodium azide	0.08 ml

[Bulk quote request](#)

Availability	1-3 business days
Species Reactivity	Human
Format	Purified
Clonality	Monoclonal (mouse origin)
Isotype	Mouse IgG1
Clone Name	381CT18.5.1
Purity	Purified
UniProt	Q04724
Applications	Western Blot : 1:100-1:250
Limitations	This TLE1 antibody is available for research use only.



Description

Transcriptional corepressor that binds to a number of transcription factors. Inhibits NF-kappa-B-regulated gene expression. Inhibits the transcriptional activation mediated by FOXA2, and by CTNNB1 and TCF family members in Wnt signaling. The effects of full-length TLE family members may be modulated by association with dominant-negative AES. Unusual function as coactivator for ESRG.

Application Notes

Titration of the TLE1 antibody may be required due to differences in protocols and secondary/substrate sensitivity.

Immunogen

A portion of amino acids 199-228 from the human protein was used as the immunogen for this TLE1 antibody.

Storage

Aliquot the TLE1 antibody and store frozen at -20oC or colder. Avoid repeated freeze-thaw cycles.