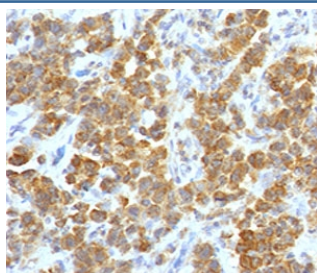


## TL1A Antibody / VEGI / TNFSF15 [clone TLRM1-1] (V7227)

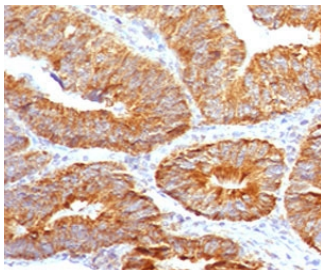
Catalog No.	Formulation	Size
V7227-100UG	0.2 mg/ml in 1X PBS with 0.1 mg/ml BSA (US sourced) and 0.05% sodium azide	100 ug
V7227-20UG	0.2 mg/ml in 1X PBS with 0.1 mg/ml BSA (US sourced) and 0.05% sodium azide	20 ug
V7227SAF-100UG	1 mg/ml in 1X PBS; BSA free, sodium azide free	100 ug

**Bulk quote request**

<b>Species Reactivity</b>	Human
<b>Format</b>	Purified
<b>Clonality</b>	Monoclonal (mouse origin)
<b>Isotype</b>	Mouse IgG1, kappa
<b>Clone Name</b>	TLRM1-1
<b>Purity</b>	Protein G affinity chromatography
<b>Buffer</b>	1X PBS, pH 7.4
<b>UniProt</b>	O95150
<b>Gene ID</b>	9966
<b>Localization</b>	Cytoplasmic, cell surface, secreted
<b>Applications</b>	Immunohistochemistry (FFPE) : 1-2ug/ml
<b>Limitations</b>	This TL1A antibody is available for research use only.



IHC testing of FFPE human parathyroid tumor with TL1A antibody (clone TLRM1-1). Staining of FFPE tissue requires boiling sections in 10mM Tris with 1mM EDTA, pH9, for 10-20 min followed by cooling at RT for 20 min.



IHC testing of FFPE human colon carcinoma with TL1A antibody (clone TLRM1-1). Staining of FFPE tissue requires boiling sections in 10mM Tris with 1mM EDTA, pH9, for 10-20 min followed by cooling at RT for 20 min.

## Description

## Application Notes

The concentration stated for each application is a general starting point. Variations in protocols, secondaries and substrates may require the TL1A antibody to be titrated up or down for optimal performance.

## Immunogen

A full length human recombinant protein was used as the immunogen for this TL1A antibody.

## Storage

Store the TL1A antibody at 2-8°C (with azide) or aliquot and store at -20°C or colder (without azide).

## References (3)