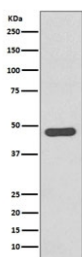


## Tissue Factor Antibody / CD142 [clone GGE-6] (RQ5414)

Catalog No.	Formulation	Size
RQ5414	Antibody in PBS with 0.02% sodium azide, 50% glycerol and 0.4-0.5mg/ml BSA	100 ul

[Bulk quote request](#)

Availability	1-2 weeks
Species Reactivity	Human
Format	Purified
Clonality	Rabbit Monoclonal
Isotype	Rabbit IgG
Clone Name	GGE-6
Purity	Affinity purified
UniProt	P13726
Applications	Western Blot : 1:1000-1:2000
Limitations	This Tissue Factor antibody is available for research use only.



Western blot testing of human SH-SY5Y cell lysate with Tissue Factor antibody.  
Expected molecular weight: 33-50 kDa depending on glycosylation level.

### Description

The F3 gene encodes coagulation factor III which is a cell surface glycoprotein. This factor enables cells to initiate the blood coagulation cascades, and it functions as the high-affinity receptor for the coagulation factor VII. The resulting complex provides a catalytic event that is responsible for initiation of the coagulation protease cascades by specific limited proteolysis. Unlike the other cofactors of these protease cascades, which circulate as nonfunctional precursors, this factor is a potent initiator that is fully functional when expressed on cell surfaces. There are 3 distinct domains of this factor: extracellular, transmembrane, and cytoplasmic. This protein is the only one in the coagulation pathway for which a congenital deficiency has not been described. [RefSeq]

## **Application Notes**

Optimal dilution of the Tissue Factor antibody should be determined by the researcher.

## **Immunogen**

A synthetic peptide specific to human Tissue Factor / F3 was used as the immunogen for the Tissue Factor antibody.

## **Storage**

Store the Tissue Factor antibody at -20oC.