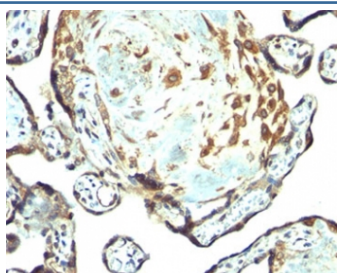


TIMP3 Antibody (V2272)

Catalog No.	Formulation	Size
V2272-100UG	0.2 mg/ml in 1X PBS with 0.1 mg/ml BSA (US sourced) and 0.05% sodium azide	100 ug
V2272-20UG	0.2 mg/ml in 1X PBS with 0.1 mg/ml BSA (US sourced) and 0.05% sodium azide	20 ug
V2272SAF-100UG	1 mg/ml in 1X PBS; BSA free, sodium azide free	100 ug
V2272IHC-7ML	Prediluted in 1X PBS with 0.1 mg/ml BSA (US sourced) and 0.05% sodium azide; *For IHC use only*	7 ml

[Bulk quote request](#)

Species Reactivity	Human, Mouse, Rat
Format	Purified
Clonality	Polyclonal (rabbit origin)
Isotype	Rabbit IgG
Purity	Protein A affinity chromatography
Buffer	1X PBS, pH 7.4
Gene ID	7078
Localization	Cytoplasmic
Applications	Flow Cytometry : 0.5-1ug/10 ⁶ cells Immunofluorescence : 1-2ug/ml Immunohistochemistry (FFPE) : 1-2ug/ml for 30 min at RT
Limitations	This TIMP3 antibody is available for research use only.



IHC staining of human placenta tissue with TIMP3 antibody.

Description

TIMP3 (tissue inhibitor of metalloproteinases 3), along with family members TIMP1, TIMP2, and TIMP4, are inhibitors of the matrix metalloproteinases (MMPs), a group of peptidases involved in degradation of the extracellular matrix (ECM). An imbalance between MMPs and the associated TIMPs may play a significant role in the invasive phenotype of malignant tumors. TIMPs inhibit the proteolytic invasiveness of tumor cells and normal placental trophoblast cells. TIMP3 may be involved in regulating trophoblastic invasion of the uterus as well as in regulating remodeling of the extracellular matrix during the folding of epithelia, and in the formation, branching and expansion of epithelial tubes.

Application Notes

The concentration stated for each application is a general starting point. Variations in protocols, secondaries and substrates may require the TIMP3 antibody to be titrated up or down for optimal performance.

1. Staining of formalin-fixed tissues requires boiling tissue sections in 10mM citrate buffer, pH 6.0, for 10-20 min followed by cooling at RT for 20 minutes.
2. The prediluted format is supplied in a dropper bottle and is optimized for use in IHC. After epitope retrieval step (if required), drip mAb solution onto the tissue section and incubate at RT for 30 min.

Immunogen

Amino acids 175-211 of human TIMP3 Ab was used as the immunogen for this antibody (100% homologous in cow, dog and horse, and 94% homologous in mouse and rat).

Storage

Store the TIMP3 antibody at 2-8°C (with azide) or aliquot and store at -20°C or colder (without azide).

References (2)