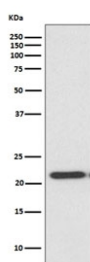


TIMP2 Antibody [clone AADE-20] (RQ5461)

Catalog No.	Formulation	Size
RQ5461	Antibody in PBS with 0.02% sodium azide, 50% glycerol and 0.4-0.5mg/ml BSA	100 ul

[Bulk quote request](#)

Availability	1-2 weeks
Species Reactivity	Human
Format	Purified
Clonality	Rabbit Monoclonal
Isotype	Rabbit IgG
Clone Name	AADE-20
Purity	Affinity purified
UniProt	P16035
Applications	Western Blot : 1:500-1:2000
Limitations	This TIMP2 antibody is available for research use only.



Western blot testing of human HeLa cell lysate with TIMP2 antibody. Predicted molecular weight ~24 kDa.

Description

The TIMP2 gene is a member of the TIMP gene family. The proteins encoded by this gene family are natural inhibitors of the matrix metalloproteinases, a group of peptidases involved in degradation of the extracellular matrix. In addition to an inhibitory role against metalloproteinases, the encoded protein has a unique role among TIMP family members in its ability to directly suppress the proliferation of endothelial cells. As a result, the encoded protein may be critical to the maintenance of tissue homeostasis by suppressing the proliferation of quiescent tissues in response to angiogenic factors, and by inhibiting protease activity in tissues undergoing remodelling of the extracellular matrix. [RefSeq]

Application Notes

Optimal dilution of the TIMP2 antibody should be determined by the researcher.

Immunogen

A synthetic peptide specific to human TIMP2 was used as the immunogen for the TIMP2 antibody.

Storage

Store the TIMP2 antibody at -20oC.