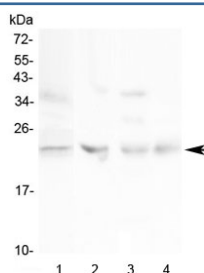


TIMP1 Antibody (R32846)

Catalog No.	Formulation	Size
R32846	0.5mg/ml if reconstituted with 0.2ml sterile DI water	100 ug

Bulk quote request

Availability	1-3 business days
Species Reactivity	Human, Mouse, Rat
Format	Antigen affinity purified
Clonality	Polyclonal (rabbit origin)
Isotype	Rabbit IgG
Purity	Antigen affinity
Buffer	Lyophilized from 1X PBS with 2.5% BSA and 0.025% sodium azide
UniProt	P01033
Localization	Cytoplasmic, secreted
Applications	Western Blot : 0.5-1ug/ml Direct ELISA (human Recombinant Protein) : 0.1-0.5ug/ml (BSA-free format available)
Limitations	This TIMP1 antibody is available for research use only.



Western blot testing of 1) human HeLa, 2) rat ovary, 3) rat lung and 4) mouse ovary lysate with TIMP1 antibody at 0.5ug/ml. Expected molecular weight: 23-28 kDa depending on the level of glycosylation.

Description

TIMP metalloproteinase inhibitor 1, also known as TIMP1, a tissue inhibitor of metalloproteinases, is a glycoprotein that is expressed from the several tissues of organisms. This protein is a member of the TIMP family. The glycoprotein is a natural inhibitor of the matrix metalloproteinases (MMPs), a group of peptidases involved in degradation of the extracellular matrix. In addition to its inhibitory role against most of the known MMPs, the encoded protein is able to promote cell proliferation in a wide range of cell types, and may also have an anti-apoptotic function. Transcription of this gene is highly inducible in response to many cytokines and hormones. TIMP was found to be located about 22 cM

proximal to OTC (300461).

Application Notes

Optimal dilution of the TIMP1 antibody should be determined by the researcher.

Immunogen

A recombinant human protein corresponding to amino acids C24-A207 was used as the immunogen for the TIMP1 antibody.

Storage

After reconstitution, the TIMP1 antibody can be stored for up to one month at 4°C. For long-term, aliquot and store at -20°C. Avoid repeated freezing and thawing.