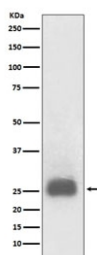


## TIMP1 Antibody [clone AOOI-20] (RQ4856)

Catalog No.	Formulation	Size
RQ4856	Antibody in PBS with 0.02% sodium azide, 50% glycerol and 0.4-0.5mg/ml BSA	100 ul

[Bulk quote request](#)

Availability	1-2 weeks
Species Reactivity	Human
Format	Purified
Clonality	Rabbit Monoclonal
Isotype	Rabbit IgG
Clone Name	AOOI-20
Purity	Affinity purified
UniProt	P01033
Applications	Western Blot : 1:500-1:2000
Limitations	This TIMP1 antibody is available for research use only.



Western blot testing of lysate from TPA-treated human HL60 cells with TIMP1 antibody. Expected molecular weight: 23-28 kDa depending on the level of glycosylation.

### Description

Metalloproteinase inhibitor that functions by forming one to one complexes with target metalloproteinases, such as collagenases, and irreversibly inactivates them by binding to their catalytic zinc cofactor. [UniProt]

### Application Notes

Optimal dilution of the TIMP1 antibody should be determined by the researcher.

### Immunogen

A synthetic peptide specific to human TIMP1 was used as the immunogen for the TIMP1 antibody.

## Storage

Store the TIMP1 antibody at -20oC.