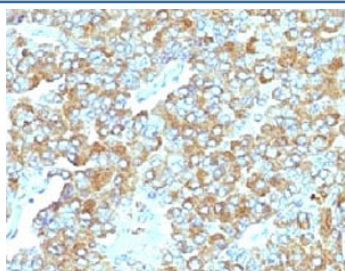


## TIM3 Antibody / HAVCR2 [clone TMDP3-1] (V7533)

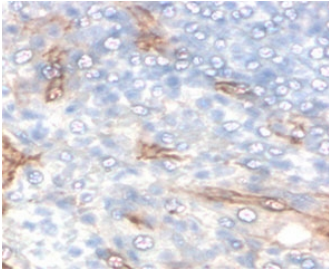
Catalog No.	Formulation	Size
V7533-100UG	0.2 mg/ml in 1X PBS with 0.1 mg/ml BSA (US sourced) and 0.05% sodium azide	100 ug
V7533-20UG	0.2 mg/ml in 1X PBS with 0.1 mg/ml BSA (US sourced) and 0.05% sodium azide	20 ug
V7533SAF-100UG	1 mg/ml in 1X PBS; BSA free, sodium azide free	100 ug
V7533IHC-7ML	Prediluted in 1X PBS with 0.1 mg/ml BSA (US sourced) and 0.05% sodium azide; *For IHC use only*	7 ml

[Bulk quote request](#)

<b>Availability</b>	1-3 business days
<b>Species Reactivity</b>	Human
<b>Format</b>	Purified
<b>Clonality</b>	Monoclonal (mouse origin)
<b>Isotype</b>	Mouse IgG2a, kappa
<b>Clone Name</b>	TMDP3-1
<b>Purity</b>	Protein G affinity chromatography
<b>UniProt</b>	Q8TDQ0
<b>Localization</b>	Cell surface, cytoplasmic
<b>Applications</b>	Immunohistochemistry (FFPE) : 1-2ug/ml for 30 min at RT Prediluted IHC Only Format : incubate for 30 min at RT (1)
<b>Limitations</b>	This TIM3 antibody is available for research use only.



IHC staining of FFPE human adrenal gland with TIM3 antibody (clone TMDP3-1). HIER: boil tissue sections in pH 9 10mM Tris with 1mM EDTA for 10-20 min and allow to cool before testing.



IHC staining of FFPE human tonsil with TIM3 antibody (clone TMDP3-1). HIER: boil tissue sections in pH 9 10mM Tris with 1mM EDTA for 10-20 min and allow to cool before testing.

## Description

The protein encoded by the HAVCR2 gene belongs to the immunoglobulin superfamily, and TIM family of proteins. CD4-positive T helper lymphocytes can be divided into types 1 (Th1) and 2 (Th2) on the basis of their cytokine secretion patterns. Th1 cells are involved in cell-mediated immunity to intracellular pathogens and delayed-type hypersensitivity reactions, whereas, Th2 cells are involved in the control of extracellular helminthic infections and the promotion of atopic and allergic diseases. This protein is a Th1-specific cell surface protein that regulates macrophage activation, and inhibits Th1-mediated auto- and alloimmune responses, and promotes immunological tolerance. [RefSeq]

## Application Notes

Optimal dilution of the TIM3 antibody should be determined by the researcher.

1. The prediluted format is supplied in a dropper bottle and is optimized for use in IHC. After epitope retrieval step (if required), drip mAb solution onto the tissue section and incubate at RT for 30 min.

## Immunogen

A recombinant fragment of human TIM3 protein within amino acids 22-202 was used as the immunogen for the TIM3 antibody.

## Storage

Store the TIM3 antibody at 2-8°C (with azide) or aliquot and store at -20°C or colder (without azide).