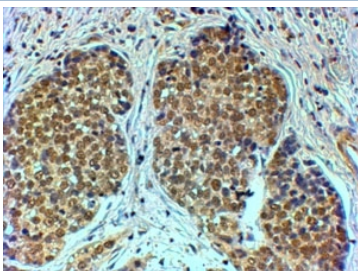


## TIF1A Antibody (R34626)

Catalog No.	Formulation	Size
R34626-100UG	0.5 mg/ml in 1X TBS, pH7.3, with 0.5% BSA (US sourced) and 0.02% sodium azide	100 ug

### Bulk quote request

Availability	1-3 business days
Species Reactivity	Human
Predicted Reactivity	Cow
Format	Antigen affinity purified
Clonality	Polyclonal (goat origin)
Isotype	Goat Ig
Purity	Antigen affinity
Gene ID	8805
Applications	Immunohistochemistry (FFPE) : 4-6ug/ml ELISA (peptide) LOD : 1:32000
Limitations	This TIF1A antibody is available for research use only.



IHC testing of FFPE human breast cancer with TIF1A antibody at 4ug/ml. HIER: steamed with pH6 citrate buffer, HRP-staining.

## Description

Additional name(s) for this target protein: Transcriptional intermediary factor 1 alpha; TRIM24

## Application Notes

Optimal dilution of the TIF1A antibody should be determined by the researcher.

## Immunogen

Amino acids KRLKSIEERQLLK were used as the immunogen for this TIF1A antibody.

## Storage

Aliquot and store the TIF1A antibody at -20oC.