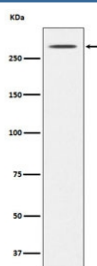


Thyroglobulin Antibody [clone AFEC-20] (RQ4963)

Catalog No.	Formulation	Size
RQ4963	Antibody in PBS with 0.02% sodium azide, 50% glycerol and 0.4-0.5mg/ml BSA	100 ul

[Bulk quote request](#)

Availability	1-2 weeks
Species Reactivity	Human, Mouse
Format	Purified
Clonality	Rabbit Monoclonal
Isotype	Rabbit IgG
Clone Name	AFEC-20
Purity	Affinity purified
UniProt	P01266
Applications	Western Blot : 1:1000-1:5000
Limitations	This Thyroglobulin antibody is available for research use only.



Western blot testing of mouse thyroid lysate with Thyroglobulin antibody. Predicted molecular weight ~305 kDa.

Description

Thyroglobulin is the precursor of the iodinated thyroid hormones thyroxine (T4) and triiodothyronine (T3). [UniProt]

Application Notes

Optimal dilution of the Thyroglobulin antibody should be determined by the researcher.

Immunogen

A synthetic peptide specific to human Thyroglobulin / TG was used as the immunogen for the Thyroglobulin antibody.

Storage

Store the Thyroglobulin antibody at -20oC.