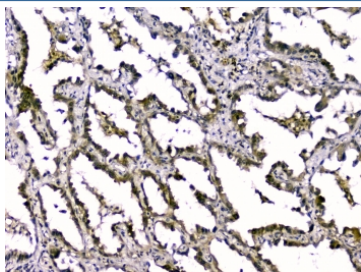


TGFB2 Antibody / TGF beta 2 (RQ4448)

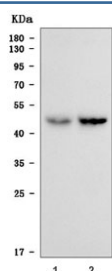
Catalog No.	Formulation	Size
RQ4448	0.5mg/ml if reconstituted with 0.2ml sterile DI water	100 ug

Bulk quote request

Availability	1-3 business days
Species Reactivity	Human
Format	Antigen affinity purified
Clonality	Polyclonal (rabbit origin)
Isotype	Rabbit IgG
Purity	Antigen affinity
Buffer	Lyophilized from 1X PBS with 2% Trehalose and 0.025% sodium azide
UniProt	P61812
Localization	Secreted
Applications	Western Blot : 0.5-1ug/ml Immunohistochemistry : 1-2ug/ml
Limitations	This TGFB2 antibody is available for research use only.



IHC staining of FFPE human lung cancer with TGFB2 antibody. HIER: boil tissue sections in pH6, 10mM citrate buffer, for 10-20 min and allow to cool before testing.



Western blot testing of human 1) HCCT and 2) HCCP cell lysate with TGFB2 antibody at 0.5ug/ml. Predicted molecular weight ~50 kDa.

Description

This gene encodes a secreted ligand of the TGF-beta (transforming growth factor-beta) superfamily of proteins. Ligands of this family bind various TGF-beta receptors leading to recruitment and activation of SMAD family transcription factors that regulate gene expression. The encoded preproprotein is proteolytically processed to generate a latency-associated peptide (LAP) and a mature peptide, and is found in either a latent form composed of a mature peptide homodimer, a LAP homodimer, and a latent TGF-beta binding protein, or in an active form consisting solely of the mature peptide homodimer. The mature peptide may also form heterodimers with other TGF-beta family members. Disruption of the TGF-beta/SMAD pathway has been implicated in a variety of human cancers. A chromosomal translocation that includes this gene is associated with Peters' anomaly, a congenital defect of the anterior chamber of the eye. Mutations in this gene may be associated with Loeys-Dietz syndrome. This gene encodes multiple isoforms that may undergo similar proteolytic processing.

Application Notes

Optimal dilution of the TGFB2 antibody should be determined by the researcher.

Immunogen

Amino acids ALDAAYCFRNVQDNCCLRPYIDFKRDLGWKWIHEPK were used as the immunogen for the TGFB2 antibody.

Storage

After reconstitution, the TGFB2 antibody can be stored for up to one month at 4°C. For long-term, aliquot and store at -20°C. Avoid repeated freezing and thawing.