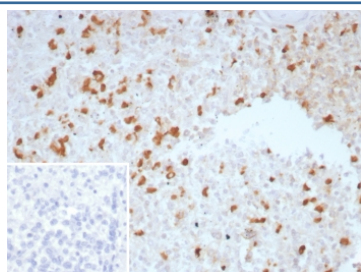


TGFB Antibody / TGF beta [clone TGFB/7230] (V4619)

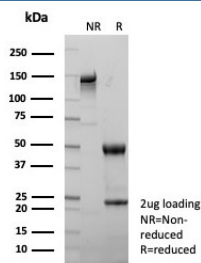
Catalog No.	Formulation	Size
V4619-100UG	0.2 mg/ml in 1X PBS with 0.1 mg/ml BSA (US sourced), 0.05% sodium azide	100 ug
V4619-20UG	0.2 mg/ml in 1X PBS with 0.1 mg/ml BSA (US sourced), 0.05% sodium azide	20 ug
V4619SAF-100UG	1 mg/ml in 1X PBS; BSA free, sodium azide free	100 ug

[Bulk quote request](#)

Availability	1-3 business days
Species Reactivity	Human
Format	Purified
Clonality	Monoclonal (mouse origin)
Isotype	Mouse IgG2, kappa
Clone Name	TGFB/7230
Purity	Protein A/G affinity
UniProt	P01137
Localization	Cytoplasm, Extracellular (secreted)
Applications	Immunohistochemistry (FFPE) : 1-2ug/ml for 30 min at RT
Limitations	This TGFB antibody is available for research use only.



IHC staining of FFPE human spleen tissue with TGFB antibody (clone TGFB/7230). Inset: PBS used in place of primary Ab (secondary Ab negative control). HIER: boil tissue sections in pH 9 10mM Tris with 1mM EDTA for 20 min and allow to cool before testing.



SDS-PAGE analysis of purified, BSA-free TGFB antibody (clone TGFB/7230) as confirmation of integrity and purity.

Description

This mAb recognizes TGF beta 1, 2 and 3. Three TGF betas have been identified in mammals. TGF beta 1, TGF beta 2 and TGF beta 3 are each synthesized as precursor proteins that are very similar in that each is cleaved to yield a 112 amino acid polypeptide that remains associated with the latent portion of the molecules. Biologically active TGF beta requires dimerization of the monomers (usually homodimers) and release of the latent peptide portion. Overall, the mature region of the TGF beta 3 protein has approximately 80% identity to the mature region of both TGF beta 1 and TGF beta 2. However, the NH2 terminals or precursor regions of their molecules share only 27% sequence identity. TGF beta s inhibits the growth of epithelial cells and stimulate the growth of mesenchymal cells.

Application Notes

Optimal dilution of the TGFB antibody should be determined by the researcher.

Immunogen

A recombinant partial protein sequence (within amino acids 200-390) from the human TGFB1 protein was used as the immunogen for the TGFB antibody.

Storage

Aliquot the TGFB antibody and store frozen at -20oC or colder. Avoid repeated freeze-thaw cycles.