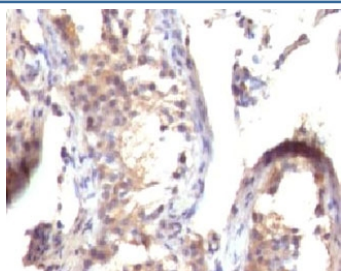


## TGF alpha Antibody [clone TGFa-1] (V7158)

Catalog No.	Formulation	Size
V7158-100UG	0.2 mg/ml in 1X PBS with 0.1 mg/ml BSA (US sourced) and 0.05% sodium azide	100 ug
V7158-20UG	0.2 mg/ml in 1X PBS with 0.1 mg/ml BSA (US sourced) and 0.05% sodium azide	20 ug
V7158SAF-100UG	1 mg/ml in 1X PBS; BSA free, sodium azide free	100 ug
V7158IHC-7ML	Prediluted in 1X PBS with 0.1 mg/ml BSA (US sourced) and 0.05% sodium azide; *For IHC use only*	7 ml

[Bulk quote request](#)

<b>Availability</b>	1-3 business days
<b>Species Reactivity</b>	Human
<b>Format</b>	Purified
<b>Clonality</b>	Monoclonal (mouse origin)
<b>Isotype</b>	Mouse IgG1, kappa
<b>Clone Name</b>	TGFa-1
<b>Purity</b>	Protein G affinity chromatography
<b>UniProt</b>	P01135
<b>Localization</b>	Cytoplasmic and extracellular (secreted)
<b>Applications</b>	Immunohistochemistry (FFPE) : 2-4ug/ml for 30 min at RT Prediluted IHC Only Format : incubate for 30 min at RT (1)
<b>Limitations</b>	This TGF alpha antibody is available for research use only.



IHC testing of FFPE human testicular carcinoma with TGF alpha antibody (clone TGFa-1). FFPE testing requires sections to be boiled in pH 9 10mM Tris with 1mM EDTA for 10-20 minutes, followed by cooling at RT for 20 minutes, prior to staining.

## Description

Transforming growth factor alpha is a protein that in humans is encoded by the TGFA gene. As a member of the epidermal growth factor (EGF) family, TGFa is a mitogenic polypeptide. The protein becomes activated when binding to receptors capable of protein kinase activity for cellular signaling. TGFa is a transforming growth factor that is a ligand for the epidermal growth factor receptor, which activates a signaling pathway for cell proliferation, differentiation and development. This protein may act as either a transmembrane-bound ligand or a soluble ligand. This gene has been associated with many types of cancers, and it may also be involved in some cases of cleft lip/palate. [Wiki]

## Application Notes

Titration of the TGF alpha antibody may be required for optimal performance.

1. The prediluted format is supplied in a dropper bottle and is optimized for use in IHC. After epitope retrieval step (if required), drip mAb solution onto the tissue section and incubate at RT for 30 min.
3. The epitope is known to be in the C-terminal region of the protein.

## Immunogen

Recombinant human full-length TGF protein was used as the immunogen for the TGF alpha antibody. (3)

## Storage

Store the TGF alpha antibody at 2-8°C (with azide) or aliquot and store at -20°C or colder (without azide).