

## TGF alpha Antibody [clone MF9] (V2266)

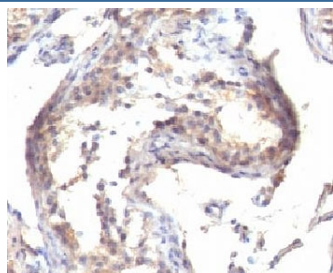
| Catalog No.    | Formulation  | Size   |
|----------------|--|--------|
| V2266-100UG    | 0.2 mg/ml in 1X PBS with 0.1 mg/ml BSA (US sourced) and 0.05% sodium azide | 100 ug |
| V2266-20UG     | 0.2 mg/ml in 1X PBS with 0.1 mg/ml BSA (US sourced) and 0.05% sodium azide | 20 ug  |
| V2266SAF-100UG | 1 mg/ml in 1X PBS; BSA free, sodium azide free                             | 100 ug |



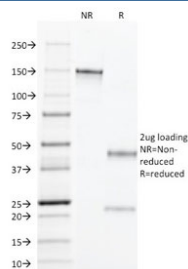
Citations (4)

[Bulk quote request](#)

|                           |   |
|---------------------------|---|
| <b>Species Reactivity</b> | Human, Mouse, Rat   |
| <b>Format</b>             | Purified  |
| <b>Clonality</b>          | Monoclonal (mouse origin)   |
| <b>Isotype</b>            | Mouse IgG1, kappa   |
| <b>Clone Name</b>         | MF9   |
| <b>Purity</b>             | Protein G affinity chromatography   |
| <b>Gene ID</b>            | 7039  |
| <b>Localization</b>       | Cytoplasmic and secreted  |
| <b>Applications</b>       | ELISA : 2-4ug/ml (order BSA/azide-free format)<br>Immunohistochemistry (FFPE) : 2-4ug/ml for 30 min at RT |
| <b>Limitations</b>        | This <b>TGF alpha antibody</b> is available for research use only.  |



IHC testing of FFPE human testicular carcinoma with TGF alpha antibody



SDS-PAGE analysis of purified, BSA-free TGF alpha antibody (clone MF9) as confirmation of integrity and purity.

## Description

TGF alpha is a growth factor with 33% homology to EGF, binds to EGFR, activates tyrosine phosphorylation of the receptor, and stimulates cell proliferation. It plays a role in tumor initiation by inducing the reversible transformed phenotype. This antibody reacts with the C-terminus of TGF alpha and shows no cross-reaction with EGF and the neuropeptide synenkephalin. Staining with the antibody is completely blocked by the peptide used for raising this antibody.

## Application Notes

The concentration stated for each application is a general starting point. Variations in protocols, secondaries and substrates may require the TGF alpha antibody to be titrated up or down for optimal performance.

1. Staining of FFPE tissues requires boiling sections in 10mM Tris with 1mM EDTA, pH 9.0, for 10-20 min followed by cooling at RT for 20 min.

## Immunogen

A 17-amino acid synthetic peptide from the carboxyl-terminus of rat TGF alpha was used as the immunogen for this antibody.

## Storage

Store the TGF alpha antibody at 2-8°C (with azide) or aliquot and store at -20°C or colder (without azide).

## Alternate Names

TGF-alpha, EGF-like TGF; ETGF; TFGA; TGF Type 1; TGFA; Wa1; Waved 1

## References (3)