

TGF alpha Antibody [clone 1E8-G6] (V2267)

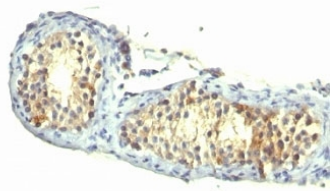
Catalog No.	Formulation	Size
V2267-100UG	0.2 mg/ml in 1X PBS with 0.1 mg/ml BSA (US sourced) and 0.05% sodium azide	100 ug
V2267-20UG	0.2 mg/ml in 1X PBS with 0.1 mg/ml BSA (US sourced) and 0.05% sodium azide	20 ug
V2267SAF-100UG	1 mg/ml in 1X PBS; BSA free, sodium azide free	100 ug



Citations (4)

[Bulk quote request](#)

Species Reactivity	Human
Format	Purified
Clonality	Monoclonal (mouse origin)
Isotype	Mouse IgM, kappa
Clone Name	1E8-G6
Purity	PEG precipitation
Buffer	1X PBS, pH 7.4
Gene ID	7039
Localization	Cytoplasmic and secreted
Applications	Flow Cytometry : 0.5-1ug/10 ⁶ cells Immunofluorescence : 1-2ug/ml Immunohistochemistry (FFPE) : 2-4ug/ml for 30 min at RT
Limitations	This TGF alpha antibody is available for research use only.



Formalin-fixed, paraffin-embedded human testicular carcinoma stained with TGF-alpha antibody (1E8-G6)

Description

TGF alpha is a growth factor with 33% homology to EGF, binds to EGFR, activates tyrosine phosphorylation of the receptor, and stimulates cell proliferation. It plays a role in tumor initiation by inducing the reversible transformed phenotype. This antibody reacts with the C-terminus of TGF alpha and shows no cross-reaction with EGF and the neuropeptide synenkephalin. Staining with the antibody is completely blocked by the peptide used for raising this antibody.

Application Notes

The concentration stated for each application is a general starting point. Variations in protocols, secondaries and substrates may require the antibody to be titrated up or down for optimal performance.

1. Staining of formalin-fixed tissues requires boiling tissue sections in 10mM Citrate Buffer, pH 6.0, for 10-20 min followed by cooling at RT for 20 minutes.

Immunogen

A 10-amino acid synthetic peptide (aa 34-43) from human TGF alpha was used as the immunogen for this antibody.

Storage

Store the TGF alpha antibody at 2-8oC (with azide) or aliquot and store at -20oC or colder (without azide).

Alternate Names

EGF-like TGF; ETGF; TFGA; TGF Type 1; TGFA; Wa1; Waved 1, TGF alpha antibody

References (2)