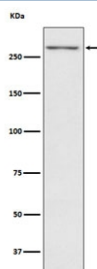


TG Antibody / Thyroglobulin [clone AFEI-20] (RQ4964)

Catalog No.	Formulation	Size
RQ4964	Antibody in PBS with 0.02% sodium azide, 50% glycerol and 0.4-0.5mg/ml BSA	100 ul

[Bulk quote request](#)

Availability	1-2 weeks
Species Reactivity	Human
Format	Purified
Clonality	Rabbit Monoclonal
Isotype	Rabbit IgG
Clone Name	AFEI-20
Purity	Affinity purified
UniProt	P01266
Applications	Western Blot : 1:1000-1:5000
Limitations	This TG antibody is available for research use only.



Western blot testing with TG antibody. Predicted molecular weight ~305 kDa.

Description

Thyroglobulin (Tg) is a glycoprotein homodimer produced predominantly by the thyroid gland. It acts as a substrate for the synthesis of thyroxine and triiodothyronine as well as the storage of the inactive forms of thyroid hormone and iodine. Thyroglobulin is secreted from the endoplasmic reticulum to its site of iodination, and subsequent thyroxine biosynthesis, in the follicular lumen. Mutations in this gene cause thyroid dysmorphogenesis, manifested as goiter, and are associated with moderate to severe congenital hypothyroidism. [RefSeq]

Application Notes

Optimal dilution of the TG antibody should be determined by the researcher.

Immunogen

A synthetic peptide specific to human Thyroglobulin / TG was used as the immunogen for the TG antibody.

Storage

Store the TG antibody at -20oC.