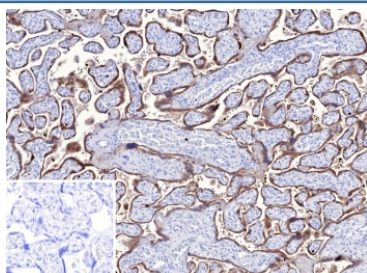


TFPI2 Antibody / Tissue factor pathway inhibitor 2 [clone TFPI2/13025] (V5812)

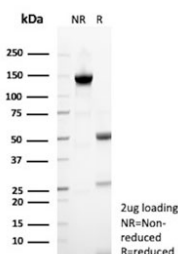
Catalog No.	Formulation	Size
V5812-100UG	0.2 mg/ml in 1X PBS with 0.1 mg/ml BSA (US sourced), 0.05% sodium azide	100 ug
V5812-20UG	0.2 mg/ml in 1X PBS with 0.1 mg/ml BSA (US sourced), 0.05% sodium azide	20 ug
V5812SAF-100UG	1 mg/ml in 1X PBS; BSA free, sodium azide free	100 ug

Bulk quote request

Availability	1-3 business days
Species Reactivity	Human
Format	Purified
Clonality	Monoclonal (mouse origin)
Isotype	Mouse IgG1, kappa
Clone Name	TFPI2/13025
Purity	Protein G affinity
UniProt	P48307
Localization	Cell membrane, cytoplasm
Applications	Immunohistochemistry (FFPE) : 1-2ug/ml
Limitations	This TFPI2 antibody is available for research use only.



IHC staining of FFPE human placental tissue with TFPI2 antibody (clone TFPI2/13025). Inset: PBS used in place of primary Ab (secondary Ab negative control). HIER: boil tissue sections in pH 9 10mM Tris with 1mM EDTA for 20 min and allow to cool before testing.



SDS-PAGE analysis of purified, BSA-free TFPI2 antibody (clone TFPI2/13025) as confirmation of integrity and purity.

Description

The extrinsic pathway of blood coagulation is initiated by contact of plasma factor VII with tissue factor, a cellular membrane glycoprotein that normally is segregated from the bloodstream but can be exposed after tissue injury or newly synthesized in endothelial cells or leukocytes after stimulation by endotoxin and cytokines. Inhibition of Factor VIIa tissue factor activity requires a plasma component (tissue factor pathway inhibitor (TFPI), lipoprotein-associated coagulation inhibitor (LACI) or extrinsic pathway inhibitor (EPI)) and factor Xa. TFPI directly inhibits factor Xa, and, in an Xa-dependent fashion, also inhibits the Factor VIIa tissue factor catalytic complex. TFPI is a multivalent, Kunitz-type proteinase inhibitor that circulates in association with plasma lipoproteins VLDL, LDL, and HDL. TFPI-2 (also known as placental protein 5) is a related glycoprotein that was originally isolated from human placenta.

Application Notes

Optimal dilution of the TFPI2 antibody should be determined by the researcher.

Immunogen

A portion of amino acids 100-235 from human Tissue factor pathway inhibitor 2 protein was used as the immunogen for the TFPI2 antibody.

Storage

Aliquot the TFPI2 antibody and store frozen at -20°C or colder. Avoid repeated freeze-thaw cycles.