

TFPI Antibody / Tissue factor pathway inhibitor (R30896)

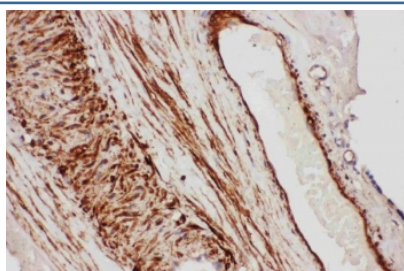
Catalog No.	Formulation	Size
R30896	0.5mg/ml if reconstituted with 0.2ml sterile DI water	100 ug

Bulk quote request

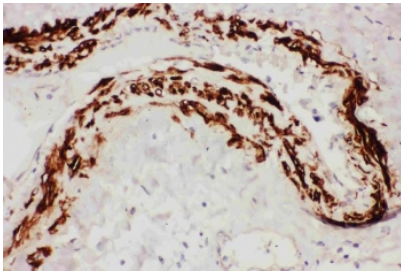
Availability	1-3 business days
Species Reactivity	Human
Format	Antigen affinity purified
Clonality	Polyclonal (rabbit origin)
Isotype	Rabbit IgG
Purity	Antigen affinity
Buffer	Lyophilized from 1X PBS with 2.5% BSA and 0.025% sodium azide/thimerosal
UniProt	P10646
Applications	Western Blot : 0.5-1ug/ml IHC (FFPE) : 0.5-1ug/ml
Limitations	This TFPI antibody is available for research use only.



Western blot testing of TFPI antibody and SMMC-7721 lysate; Predicted/observed molecular weight: 35/40-50kDa.



IHC staining of FFPE human placental tissue with TFPI antibody. HIER: boil tissue sections in pH6 citrate buffer for 20 min and allow to cool before testing.



IHC staining of FFPE human lung cancer tissue with TFPI antibody. HIER: boil tissue sections in pH6 citrate buffer for 20 min and allow to cool before testing.

Description

Tissue factor pathway inhibitor, also known as EPI, LACI, TFI and TFPT1 is a single-chain polypeptide which can reversibly inhibit Factor Xa (Xa) and Thrombin (Factor IIa). While Xa is inhibited, the Xa-TFPI complex can subsequently also inhibit the FVIIa-tissue factor complex. TFPI contributes significantly to the inhibition of Xa in vivo, despite being present at concentrations of only 2.5 nM. The gene is located on chromosome 2q31-q32.1, and has nine exons which span 70 kb. TFPI has a relative molecular mass of 34,000 to 40,000 depending on the degree of proteolysis of the C-terminal region.

Application Notes

The stated application concentrations are suggested starting amounts. Titration of the TFPI antibody may be required due to differences in protocols and secondary/substrate sensitivity.

Immunogen

Amino acids 261-280 (QECLRACKKGFIQRISKGGL-human) were used as the immunogen for this TFPI antibody.

Storage

After reconstitution, the TFPI antibody can be stored for up to one month at 4°C. For long-term, aliquot and store at -20°C. Avoid repeated freezing and thawing.