

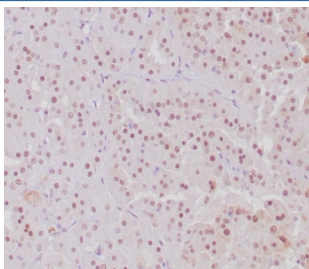
## TFE3 Antibody / Transcription factor E3 [clone TFE3/6849R] (V5328)

Catalog No.	Formulation	Size
V5328-100UG	0.2 mg/ml in 1X PBS with 0.1 mg/ml BSA (US sourced), 0.05% sodium azide	100 ug
V5328-20UG	0.2 mg/ml in 1X PBS with 0.1 mg/ml BSA (US sourced), 0.05% sodium azide	20 ug
V5328SAF-100UG	1 mg/ml in 1X PBS; BSA free, sodium azide free	100 ug

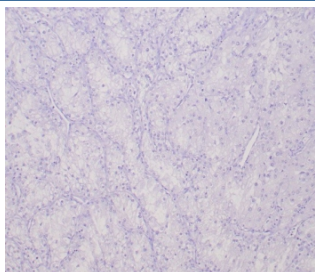
Recombinant **RABBIT MONOCLONAL**

[Bulk quote request](#)

<b>Availability</b>	1-3 business days
<b>Species Reactivity</b>	Human
<b>Format</b>	Purified
<b>Clonality</b>	Recombinant Rabbit Monoclonal
<b>Isotype</b>	Rabbit IgG, kappa
<b>Clone Name</b>	TFE3/6849R
<b>Purity</b>	Protein A/G affinity
<b>UniProt</b>	P19532
<b>Localization</b>	Nucleus
<b>Applications</b>	Immunohistochemistry (FFPE) : 1-2ug/ml for 30 min at RT
<b>Limitations</b>	This TFE3 antibody is available for research use only.



IHC staining of FFPE human MiT translocation RCC with TFE3 antibody. Nuclear staining using TFE3/6849R mAb at 2ug/ml. HIER: boil tissue sections in pH 9 10mM Tris with 1mM EDTA for 20 min and allow to cool before testing.



Negative control: IHC testing of FFPE human clear cell RCC tissue with TFE3 antibody (clone TFE3/6849R) at 2ug/ml. HIER: boil tissue sections in pH 9 10mM Tris with 1mM EDTA for 20 min and allow to cool before testing.

## Description

Transcription factor E3 (TFE3) belongs to the basic helix-loop-helix zipper transcription factor family. The TFE3 gene is located on the short arm of the X chromosome, is expressed in various cells of the human body, and participates in the regulation of various genes. The rearrangement of this gene is associated with a variety of tumors, and it is highly expressed in acinar soft tissue sarcoma with TFE3 fusion gene, Xp11.2 translocation/TFE3 gene fusion-related renal cell carcinoma, and in perivascular epithelioid cell tumors. positive expression.

## Application Notes

Optimal dilution of the TFE3 antibody should be determined by the researcher.

## Immunogen

Recombinant full-length human TFE3 protein was used as the immunogen for the TFE3 antibody.

## Storage

Aliquot the TFE3 antibody and store frozen at -20oC or colder. Avoid repeated freeze-thaw cycles.