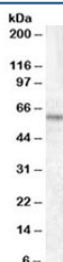


TFE3 Antibody (R35913)

Catalog No.	Formulation	Size
R35913-100UG	0.5 mg/ml in 1X TBS, pH7.3, with 0.5% BSA (US sourced) and 0.02% sodium azide	100 ug

[Bulk quote request](#)

Availability	1-3 business days
Species Reactivity	Human
Predicted Reactivity	Cow, Dog, Mouse
Format	Antigen affinity purified
Clonality	Polyclonal (goat origin)
Isotype	Goat Ig
Purity	Antigen affinity
Gene ID	7030
Applications	Western Blot : 1-3ug/ml ELISA (peptide) LOD : 1:32000
Limitations	This TFE3 antibody is available for research use only.



Western blot testing of HEK293 lysate with TFE3 antibody at 1ug/ml. Predicted molecular weight ~60kDa.

Description

Additional name(s) for this target protein: Transcription factor binding to IGHM enhancer 3

Application Notes

Optimal dilution of the TFE3 antibody should be determined by the researcher.

Immunogen

Amino acids SHAAEPARDGVEAS were used as the immunogen for this TFE3 antibody.

Storage

Aliquot and store the TFE3 antibody at -20oC.