

## Tenascin C Antibody [clone T2H5] (V2602)

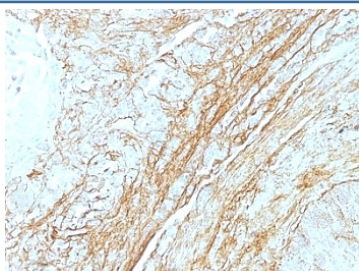
Catalog No.	Formulation	Size
V2602-100UG	0.2 mg/ml in 1X PBS with 0.1 mg/ml BSA (US sourced) and 0.05% sodium azide	100 ug
V2602-20UG	0.2 mg/ml in 1X PBS with 0.1 mg/ml BSA (US sourced) and 0.05% sodium azide	20 ug
V2602SAF-100UG	1 mg/ml in 1X PBS; BSA free, sodium azide free	100 ug
V2602IHC-7ML	Prediluted in 1X PBS with 0.1 mg/ml BSA (US sourced) and 0.05% sodium azide; *For IHC use only*	7 ml



Citations (7)

[Bulk quote request](#)

<b>Availability</b>	1-3 business days
<b>Species Reactivity</b>	Human
<b>Format</b>	Purified
<b>Clonality</b>	Monoclonal (mouse origin)
<b>Isotype</b>	Mouse IgG1, kappa
<b>Clone Name</b>	T2H5
<b>Purity</b>	Protein G affinity chromatography
<b>UniProt</b>	P24821
<b>Localization</b>	Connective tissue matrix
<b>Applications</b>	Immunohistochemistry (FFPE) : 2-4ug/ml for 30 min at RT
<b>Limitations</b>	This Tenascin C antibody is available for research use only.



IHC: Formalin-fixed, paraffin-embedded human lung carcinoma stained with Tenascin C antibody (T2H5) at 4ug/ml. Antigen retrieval in 10mM Tris with 1mM EDTA, pH 9.0; ABC detection system with DAB Chromogen. Note staining of connective tissue.

## Description

In Western blotting, it reacts with two bands of ~MW of 210kDa and 300kDa, identified as two isoforms of Tenascin C. Specificity of this mAb is validated by sequential immunoprecipitation with a PAb against Tenascin C. Tenascin C is a multifunctional, disulfide-linked hexameric extracellular matrix glycoprotein expressed in association with mesenchymal epithelial interactions during development and in the neo-vasculature and stroma of undifferentiated tumors. In adults, it is restricted to certain epithelial-stromal interfaces and increases markedly in hyper-proliferative diseases and in stroma of many neoplasms, including gliomas, breast, squamous and lung carcinomas.

## Application Notes

Optimal dilution of the Tenascin C antibody should be determined by the researcher.

1. The prediluted format is supplied in a dropper bottle and is optimized for use in IHC. After epitope retrieval step (if required), drip mAb solution onto the tissue section and incubate at RT for 30 min.

## Immunogen

Human breast carcinoma cells were used as the immunogen for the Tenascin C antibody.

## Storage

Store the Tenascin C antibody at 2-8oC (with azide) or aliquot and store at -20oC or colder (without azide).