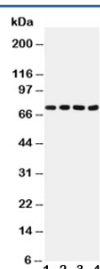


Tau Antibody / MAPT [clone TAU-2] (R30082)

Catalog No.	Formulation	Size
R30082	0.5mg/ml with 1% BSA and 0.01% sodium azide if reconstituted with 0.2ml sterile 1X PBS	100 ug

[Bulk quote request](#)

Availability	1-3 business days
Species Reactivity	Human, Bovine
Format	Ascites
Clonality	Monoclonal (mouse origin)
Isotype	Mouse IgG1
Clone Name	TAU-2
Purity	Unpurified ascites
Gene ID	4137
Applications	Western Blot : 0.5-1ug/ml IHC (FFPE) : 1-2ug/ml
Limitations	This Tau antibody is available for research use only.



Western blot testing of Tau antibody and Lane 1: rat brain (40ug); 2: rat brain (50ug); 3: mouse brain (40ug); 4: mouse brain (50ug). Expected molecular weight: 50-80 kDa.

Description

The microtubule-associated proteins (MAPs) coassemble with tubulin into microtubules in vitro. Microtubule-associated protein Tau appears to be enriched in axons. Tau is composed of 352 to 441 amino acids and migrate at 45-65KD. The isoforms differ from each other by the presence or absence of 29-amino acid or 58-amino acid inserts located in the N terminus and a 31-amino repeat located in the C terminus. Tau is important in establishing and maintaining neuronal morphology and is a major component of the neurofibrillary tangles (NFTs) characteristic of Alzheimers brain.

Application Notes

The stated application concentrations are suggested starting points. Titration of the Tau antibody may be required due to differences in protocols and secondary/substrate sensitivity.

Immunogen

Bovine microtubule-associated proteins were used as the immunogen for this Tau antibody.

Storage

After reconstitution, the Tau antibody can be stored for up to one month at 4°C. For long-term, aliquot and store at -20°C. Avoid repeated freezing and thawing.