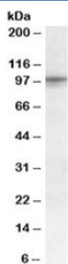


TAS1R2 Antibody (R33337)

Catalog No.	Formulation	Size
R33337-100UG	0.5 mg/ml in 1X TBS, pH7.3, with 0.5% BSA (US sourced) and 0.02% sodium azide	100 ug

[Bulk quote request](#)

Availability	1-3 business days
Species Reactivity	Human
Format	Antigen affinity purified
Clonality	Polyclonal (goat origin)
Isotype	Goat Ig
Purity	Antigen affinity
Gene ID	80834
Applications	Western Blot : 1-3ug/ml ELISA (peptide) LOD : 1:32000
Limitations	This TAS1R2 antibody is available for research use only.



Western blot testing of human pancreas lysate with TAS1R2 antibody at 0.3ug/ml.
Predicted molecular weight: ~95kDa.

Description

Additional name(s) for this target protein: Taste receptor, type 1, member 2

Application Notes

Optimal dilution of the TAS1R2 antibody should be determined by the researcher.

Immunogen

Amino acids CSKRCQSGQKKKP were used as the immunogen for this TAS1R2 antibody.

Storage

Aliquot and store the TAS1R2 antibody at -20oC.