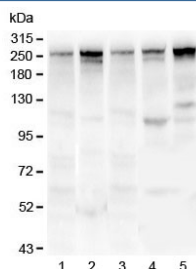


Talin 1 Antibody (RQ4466)

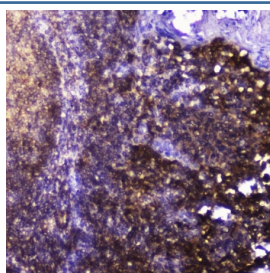
Catalog No.	Formulation	Size
RQ4466	0.5mg/ml if reconstituted with 0.2ml sterile DI water	100 ug

Bulk quote request

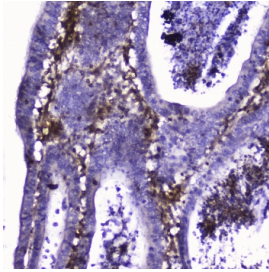
Availability	1-3 business days
Species Reactivity	Human, Mouse, Rat
Format	Antigen affinity purified
Clonality	Polyclonal (rabbit origin)
Isotype	Rabbit IgG
Purity	Antigen affinity
Buffer	Lyophilized from 1X PBS with 2% Trehalose and 0.025% sodium azide
UniProt	Q9Y490
Localization	Cytoplasm, Cell surface
Applications	Western Blot : 0.5-1ug/ml Immunohistochemistry (FFPE) : 1-2ug/ml
Limitations	This Talin 1 antibody is available for research use only.



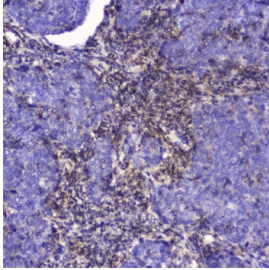
Western blot testing of 1) rat lung, 2) mouse lung, 3) human U-87 MG, 4) human MDA-MB-231 and 5) human HepG2 lysate with Talin 1 antibody. Predicted molecular weight ~275 kDa.



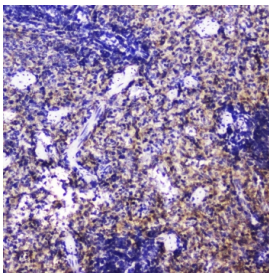
IHC testing of FFPE human tonsil tissue with Talin 1 antibody at 2ug/ml. HIER: boil tissue sections in pH6, 10mM citrate buffer, for 10-20 min followed by cooling at RT for 20 min.



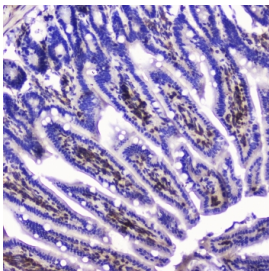
IHC testing of FFPE human intestinal cancer with Talin 1 antibody at 2ug/ml. HIER: boil tissue sections in pH6, 10mM citrate buffer, for 10-20 min followed by cooling at RT for 20 min.



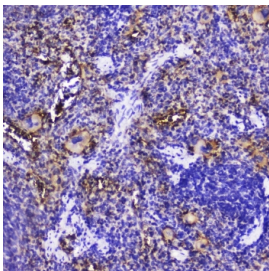
IHC testing of FFPE human lung cancer with Talin 1 antibody at 2ug/ml. HIER: boil tissue sections in pH6, 10mM citrate buffer, for 10-20 min followed by cooling at RT for 20 min.



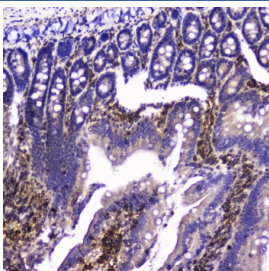
IHC testing of FFPE mouse spleen with Talin 1 antibody at 2ug/ml. HIER: boil tissue sections in pH6, 10mM citrate buffer, for 10-20 min followed by cooling at RT for 20 min.



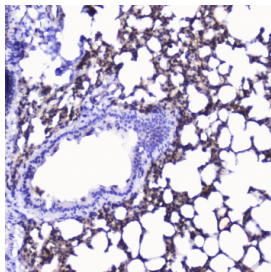
IHC testing of FFPE mouse small intestine with Talin 1 antibody at 2ug/ml. HIER: boil tissue sections in pH6, 10mM citrate buffer, for 10-20 min followed by cooling at RT for 20 min.



IHC testing of FFPE rat spleen with Talin 1 antibody at 2ug/ml. HIER: boil tissue sections in pH6, 10mM citrate buffer, for 10-20 min followed by cooling at RT for 20 min.



IHC testing of FFPE rat small intestine with Talin 1 antibody at 2ug/ml. HIER: boil tissue sections in pH6, 10mM citrate buffer, for 10-20 min followed by cooling at RT for 20 min.



IHC testing of FFPE rat lung with Talin 1 antibody at 2ug/ml. HIER: boil tissue sections in pH6, 10mM citrate buffer, for 10-20 min followed by cooling at RT for 20 min.

Description

Talin-1 is a protein that in humans is encoded by the TLN1 gene. This gene encodes a cytoskeletal protein that is concentrated in areas of cell-substratum and cell-cell contacts. The encoded protein plays a significant role in the assembly of actin filaments and in spreading and migration of various cell types, including fibroblasts and osteoclasts. It codistributes with integrins in the cell surface membrane in order to assist in the attachment of adherent cells to extracellular matrices and of lymphocytes to other cells. The N-terminus of this protein contains elements for localization to cell-extracellular matrix junctions. The C-terminus contains binding sites for proteins such as beta-1-integrin, actin, and vinculin.

Application Notes

Optimal dilution of the Talin 1 antibody should be determined by the researcher.

Immunogen

Amino acids QQLAPREGISQEALHTQMLTAVQEISHLIEPLANAARAEASQ were used as the immunogen for the Talin 1 antibody.

Storage

After reconstitution, the Talin 1 antibody can be stored for up to one month at 4oC. For long-term, aliquot and store at -20oC. Avoid repeated freezing and thawing.