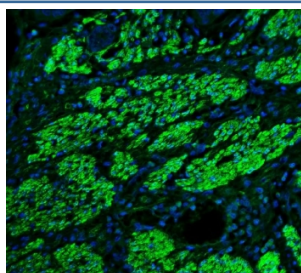


TAGLN Antibody / Transgelin / SM22 alpha (RQ6442)

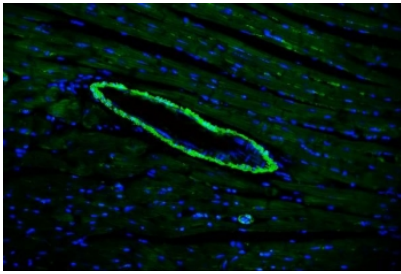
Catalog No.	Formulation	Size
RQ6442	0.5mg/ml if reconstituted with 0.2ml sterile DI water	100 ug

Bulk quote request

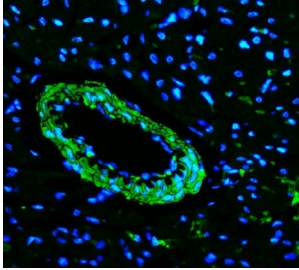
Availability	1-3 business days
Species Reactivity	Human, Mouse, Rat
Format	Purified
Clonality	Polyclonal (rabbit origin)
Isotype	Rabbit IgG
Purity	Antigen affinity purified
Buffer	Lyophilized from 1X PBS with 2% Trehalose
UniProt	Q01995
Localization	Cytoplasmic
Applications	Western Blot : 0.5-1ug/ml Immunohistochemistry (FFPE) : 2-5ug/ml Immunofluorescence (FFPE) : 5ug/ml Flow Cytometry : 1-3ug/million cells Direct ELISA : 0.1-0.5ug/ml
Limitations	This TAGLN antibody is available for research use only.



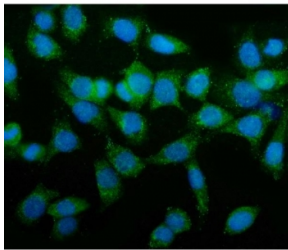
Immunofluorescent staining of FFPE human esophagus cancer tissue with TAGLN antibody (green) and DAPI nuclear stain (blue). HIER: steam section in pH8 EDTA buffer for 20 min.



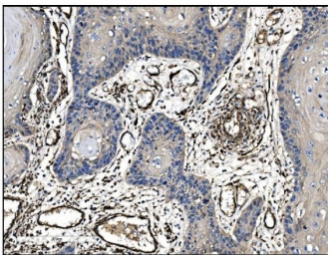
Immunofluorescent staining of FFPE mouse heart tissue with TAGLN antibody (green) and DAPI nuclear stain (blue). HIER: steam section in pH8 EDTA buffer for 20 min.



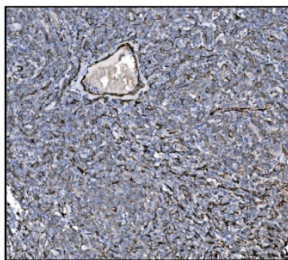
Immunofluorescent staining of FFPE rat heart tissue with TAGLN antibody (green) and DAPI nuclear stain (blue). HIER: steam section in pH8 EDTA buffer for 20 min.



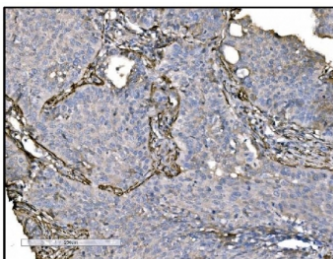
Immunofluorescent staining of FFPE human Caco-2 cells with TAGLN antibody (green) and DAPI nuclear stain (blue). HIER: steam section in pH6 citrate buffer for 20 min.



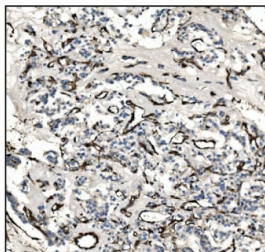
IHC staining of FFPE human esophageal squamous carcinoma tissue with TAGLN antibody. HIER: boil tissue sections in pH8 EDTA for 20 min and allow to cool before testing.



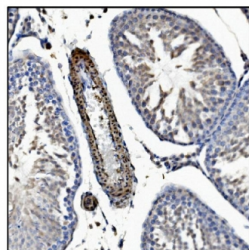
IHC staining of FFPE human lymphoma tissue with TAGLN antibody. HIER: boil tissue sections in pH8 EDTA for 20 min and allow to cool before testing.



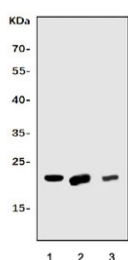
IHC staining of FFPE human lung cancer tissue with TAGLN antibody. HIER: boil tissue sections in pH8 EDTA for 20 min and allow to cool before testing.



IHC staining of FFPE human adrenal cortical adenocarcinoma tissue with TAGLN antibody. HIER: boil tissue sections in pH8 EDTA for 20 min and allow to cool before testing.



IHC staining of FFPE rat testis tissue with TAGLN antibody. HIER: boil tissue sections in pH8 EDTA for 20 min and allow to cool before testing.



Western blot testing of 1) human HepG2, 2) rat stomach and 3) mouse spleen tissue lysate with TAGLN antibody. Predicted molecular weight ~23 kDa.

Description

Transgelin, also known as SM22 alpha, is a protein that in humans is encoded by the TAGLN gene. This gene encodes a shape change and transformation sensitive actin-binding protein which belongs to the calponin family. It is ubiquitously expressed in vascular and visceral smooth muscle, and is an early marker of smooth muscle differentiation. The encoded protein is thought to be involved in calcium-independent smooth muscle contraction. It acts as a tumor suppressor, and the loss of its expression is an early event in cell transformation and the development of some tumors, coinciding with cellular plasticity. The encoded protein has a domain architecture consisting of an N-terminal calponin homology (CH) domain and a C-terminal calponin-like (CLIK) domain. Mice with a knockout of the orthologous gene are viable and fertile but their vascular smooth muscle cells exhibit alterations in the distribution of the actin filament and changes in cytoskeletal organization.

Application Notes

Optimal dilution of the TAGLN antibody should be determined by the researcher.

Immunogen

Recombinant human protein (amino acids Q15-E170) was used as the immunogen for the TAGLN antibody.

Storage

After reconstitution, the TAGLN antibody can be stored for up to one month at 4°C. For long-term, aliquot and store at -20°C. Avoid repeated freezing and thawing.

