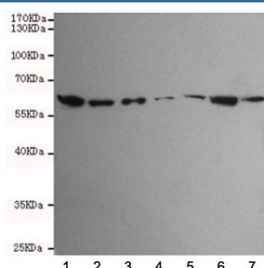


## TAB1 Antibody [clone 1B9-D11-B10] (F54051)

Catalog No.	Formulation	Size
F54051-0.1ML	In PBS with 50% glycerol and 0.03% ProClin 300	0.1 ml

**Bulk quote request**

<b>Availability</b>	1-3 business days
<b>Species Reactivity</b>	Human
<b>Format</b>	Purified
<b>Clonality</b>	Monoclonal (mouse origin)
<b>Isotype</b>	Mouse IgG2b
<b>Clone Name</b>	1B9-D11-B10
<b>Purity</b>	Protein G affinity
<b>UniProt</b>	Q15750
<b>Applications</b>	Western Blot : 1:1000
<b>Limitations</b>	This TAB1 antibody is available for research use only.



Western blot testing of human 1) HCT116, 2) SW480, 3) HepG2, 4) A549, 5) Jurkat, 6) K562 and 7) HeLa cell lysates using TAB1 antibody at 1:1000. Predicted molecular weight ~55 kDa.

## Description

TAB1 (TAK1-binding protein 1) may be an important signaling intermediate between TGFB receptors and MAP3K7/TAK1. May play an important role in mammalian embryogenesis. [UniProt]

## Application Notes

The stated application concentrations are suggested starting points. Titration of the TAB1 antibody may be required due to differences in protocols and secondary/substrate sensitivity.

## Immunogen

A human recombinant protein was used as the immunogen for this TAB1 antibody.

## Storage

Store the TAB1 antibody at -20oC.