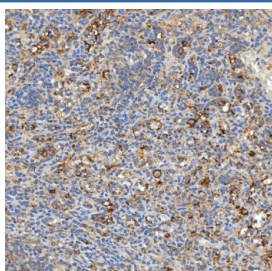


Syntaphilin Antibody / SNPH (RQ7728)

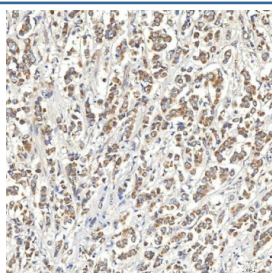
Catalog No.	Formulation	Size
RQ7728	0.5mg/ml if reconstituted with 0.2ml sterile DI water	100 ug

Bulk quote request

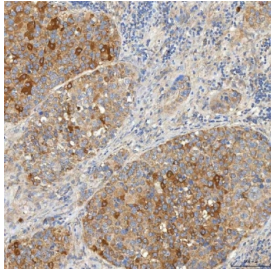
Availability	1-3 business days
Species Reactivity	Human, Mouse, Rat
Format	Antigen affinity purified
Clonality	Polyclonal (rabbit origin)
Isotype	Rabbit IgG
Purity	Antigen affinity purified
Buffer	Lyophilized from 1X PBS with 2% Trehalose
UniProt	O15079
Applications	Western Blot : 0.5-1ug/ml Immunohistochemistry (FFPE) : 2-5ug/ml Direct ELISA : 0.1-0.5ug/ml
Limitations	This Syntaphilin antibody is available for research use only.



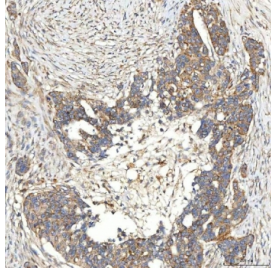
IHC staining of FFPE human spleen tissue with Syntaphilin antibody. HIER: boil tissue sections in pH8 EDTA for 20 min and allow to cool before testing.



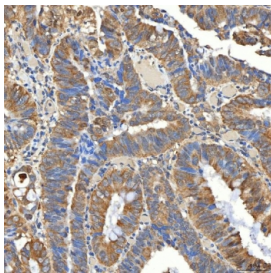
IHC staining of FFPE human breast cancer tissue with Syntaphilin antibody. HIER: boil tissue sections in pH8 EDTA for 20 min and allow to cool before testing.



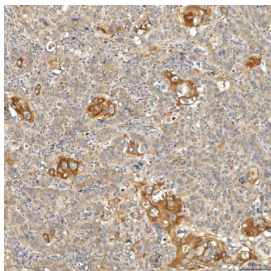
IHC staining of FFPE human liver cancer tissue with Syntaphilin antibody. HIER: boil tissue sections in pH8 EDTA for 20 min and allow to cool before testing.



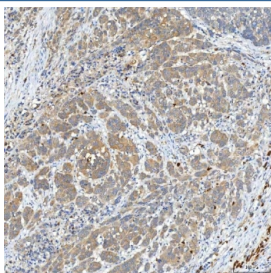
IHC staining of FFPE human ovarian serous adenocarcinoma tissue with Syntaphilin antibody. HIER: boil tissue sections in pH8 EDTA for 20 min and allow to cool before testing.



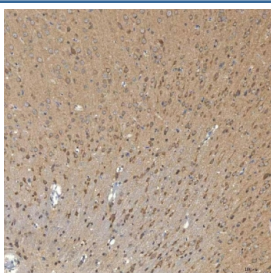
IHC staining of FFPE human rectum adenocarcinoma tissue with Syntaphilin antibody. HIER: boil tissue sections in pH8 EDTA for 20 min and allow to cool before testing.



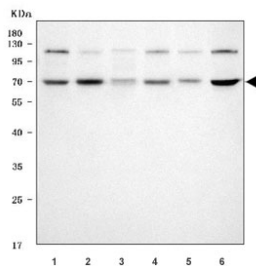
IHC staining of FFPE human larynx squamous cell carcinoma tissue with Syntaphilin antibody. HIER: boil tissue sections in pH8 EDTA for 20 min and allow to cool before testing.



IHC staining of FFPE human prostate adenocarcinoma tissue with Syntaphilin antibody. HIER: boil tissue sections in pH8 EDTA for 20 min and allow to cool before testing.



IHC staining of FFPE rat brain tissue with Syntaphilin antibody. HIER: boil tissue sections in pH8 EDTA for 20 min and allow to cool before testing.



Western blot testing of 1) human HeLa, 2) human A549, 3) human PC-3, 4) human U-2 OS, 5) rat C6 and 6) mouse Neuro-2a cell lysate with Syntaphilin antibody. Predicted molecular weight ~54 kDa but commonly observed at ~68 kDa.

Description

Syntaphilin is a protein that in humans is encoded by the SNPH gene. Syntaxin-1, synaptobrevin/VAMP, and SNAP25 interact to form the SNARE complex, which is required for synaptic vesicle docking and fusion. The protein encoded by this gene is membrane-associated and inhibits SNARE complex formation by binding free syntaxin-1. Expression of this gene appears to be brain-specific. Alternative splicing results in multiple transcript variants encoding different isoforms.

Application Notes

Optimal dilution of the Syntaphilin antibody should be determined by the researcher.

Immunogen

E. coli-derived recombinant human protein (amino acids Y43-Q482) was used as the immunogen for the Syntaphilin antibody.

Storage

After reconstitution, the Syntaphilin antibody can be stored for up to one month at 4°C. For long-term, aliquot and store at -20°C. Avoid repeated freezing and thawing.