

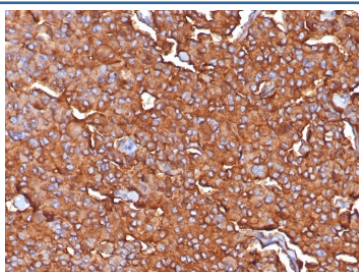
## Synaptophysin Antibody / SYP [clone SYP/7976R] (V5336)

Catalog No.	Formulation	Size
V5336-100UG	0.2 mg/ml in 1X PBS with 0.1 mg/ml BSA (US sourced), 0.05% sodium azide	100 ug
V5336-20UG	0.2 mg/ml in 1X PBS with 0.1 mg/ml BSA (US sourced), 0.05% sodium azide	20 ug
V5336SAF-100UG	1 mg/ml in 1X PBS; BSA free, sodium azide free	100 ug

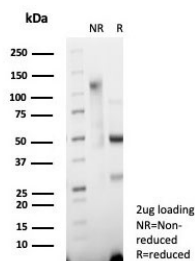
Recombinant **RABBIT MONOCLONAL**

[Bulk quote request](#)

<b>Availability</b>	1-3 business days
<b>Species Reactivity</b>	Human
<b>Format</b>	Purified
<b>Clonality</b>	Recombinant Rabbit Monoclonal
<b>Isotype</b>	Rabbit IgG, kappa
<b>Clone Name</b>	SYP/7976R
<b>Purity</b>	Protein A/G affinity
<b>UniProt</b>	P08247
<b>Localization</b>	Cytoplasm
<b>Applications</b>	Immunohistochemistry (FFPE) : 1-2ug/ml for 30 min at RT
<b>Limitations</b>	This Synaptophysin antibody is available for research use only.



IHC staining of FFPE human adrenal tissue with Synaptophysin antibody (clone SYP/7976R). HIER: boil tissue sections in pH 9 10mM Tris with 1mM EDTA for 20 min and allow to cool before testing.



SDS-PAGE analysis of purified, BSA-free Synaptophysin antibody (clone SYP/7976R) as confirmation of integrity and purity.

## Description

This recombinant rabbit monoclonal antibody recognizes a protein of 38kDa that is identified as synaptophysin. It is an N-glycosylated integral membrane protein found in neurons and endocrine cells. Synaptophysin contains four transmembrane domains and may function as a gap junction-like channel. This antibody identifies normal neuroendocrine cells and neuroendocrine neoplasms. Diffuse, finely granular, cytoplasmic staining is observed, which probably correlates with the distribution of the antigen within neurosecretory vesicles. Synaptophysin is an independent, broad-range marker of neural and neuroendocrine differentiation.

## Application Notes

Optimal dilution of the Synaptophysin antibody should be determined by the researcher.

## Immunogen

A recombinant partial protein sequence (within amino acids 274-313) from the human protein was used as the immunogen for the Synaptophysin antibody.

## Storage

Aliquot the Synaptophysin antibody and store frozen at -20oC or colder. Avoid repeated freeze-thaw cycles.