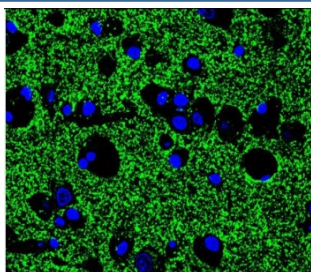


Synaptophysin Antibody / SYP (F54316)

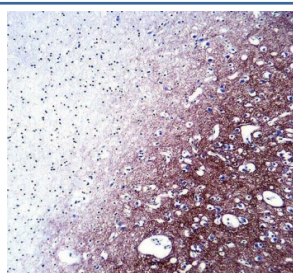
Catalog No.	Formulation	Size
F54316-0.4ML	In 1X PBS, pH 7.4, with 0.09% sodium azide	0.4 ml
F54316-0.08ML	In 1X PBS, pH 7.4, with 0.09% sodium azide	0.08 ml

Bulk quote request

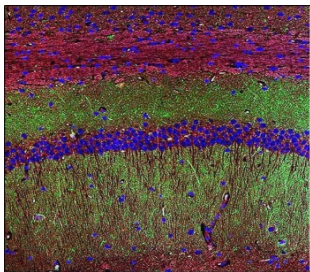
Availability	1-3 business days
Species Reactivity	Human, Mouse
Format	Purified
Clonality	Polyclonal (rabbit origin)
Isotype	Rabbit Ig
Purity	Antigen affinity purified
UniProt	P08247
Applications	Western Blot : 1:500-1:2000 Immunohistochemistry (FFPE) : 1:25 Immunofluorescence : 1:25 Flow Cytometry : 1:25 (1x10e6 cells)
Limitations	This Synaptophysin antibody is available for research use only.



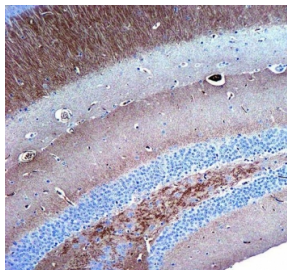
Immunofluorescent staining of human brain tissue with Synaptophysin antibody (green) and DAPI nuclear stain (blue).



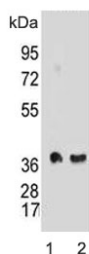
IHC testing of FFPE human brain tissue with Synaptophysin antibody. HIER: steam section in pH6 citrate buffer for 20 min and allow to cool prior to staining.



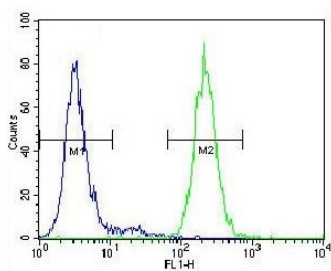
Immunofluorescent staining of mouse brain tissue with Synaptophysin antibody (green) and DAPI nuclear stain (blue).



IHC testing of FFPE mouse hippocampus tissue with Synaptophysin antibody. HIER: steam section in pH6 citrate buffer for 20 min and allow to cool prior to staining.



Western blot testing of mouse 1) brain and 2) cerebellum lysate with Synaptophysin antibody. Predicted molecular weight: 34-38 kDa.



Flow cytometry testing of mouse Neuro-2a cells with Synaptophysin antibody; Blue=isotype control, Green= Synaptophysin antibody.

Description

Synaptophysin (p38) is an integral membrane protein of small synaptic vesicles in brain and endocrine cells.[supplied by OMIM].

Application Notes

The stated application concentrations are suggested starting points. Titration of the Synaptophysin antibody may be required due to differences in protocols and secondary/substrate sensitivity.

Immunogen

A portion of amino acids 225-253 from the human protein was used as the immunogen for the Synaptophysin Antibody.

Storage

Aliquot the Synaptophysin antibody and store frozen at -20oC or colder. Avoid repeated freeze-thaw cycles.

