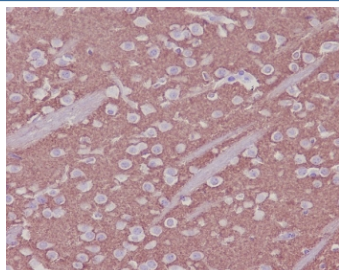


## Synaptophysin Antibody / SYP [clone BGB-19] (RQ5210)

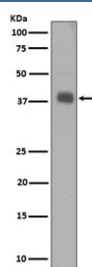
Catalog No.	Formulation	Size
RQ5210	Antibody in PBS with 0.02% sodium azide, 50% glycerol and 0.4-0.5mg/ml BSA	100 ul

[Bulk quote request](#)

Availability	1-2 weeks
Species Reactivity	Human, Mouse
Format	Purified
Clonality	Rabbit Monoclonal
Isotype	Rabbit IgG
Clone Name	BGB-19
Purity	Affinity purified
UniProt	P08247
Localization	Cytoplasmic
Applications	Western Blot : 1:1000-1:2000 Immunohistochemistry (FFPE) : 1:50-1:200
Limitations	This Synaptophysin antibody is available for research use only.



IHC staining of FFPE mouse brain tissue with Synaptophysin antibody. HIER: boil tissue sections in pH6, 10mM citrate buffer, for 10-20 min and allow to cool before testing.



Western blot testing of human SH-SY5Y cell lysate with Synaptophysin antibody. Predicted molecular weight: 34-38 kDa.

## Description

This gene encodes an integral membrane protein of small synaptic vesicles in brain and endocrine cells. The protein also binds cholesterol and is thought to direct targeting of vesicle-associated membrane protein 2 (synaptobrevin) to intracellular compartments. Mutations in this gene are associated with an X-linked form of cognitive disability. [RefSeq]

## Application Notes

Optimal dilution of the Synaptophysin antibody should be determined by the researcher.

## Immunogen

A synthetic peptide specific to human Synaptophysin / SYP was used as the immunogen for the Synaptophysin antibody.

## Storage

Store the Synaptophysin antibody at -20oC.