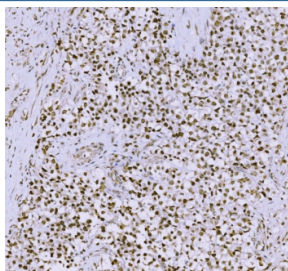


Synaptonemal Complex Protein 3 Antibody / SYCP3 (RQ6685)

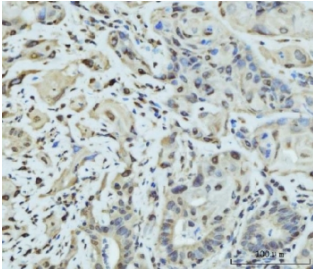
Catalog No.	Formulation	Size
RQ6685	0.5mg/ml if reconstituted with 0.2ml sterile DI water	100 ug

Bulk quote request

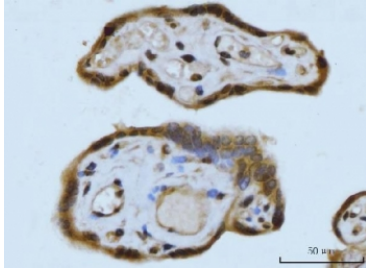
Availability	1-3 business days
Species Reactivity	Human, Mouse, Rat
Format	Antigen affinity purified
Clonality	Polyclonal (rabbit origin)
Isotype	Rabbit IgG
Purity	Antigen affinity purified
Buffer	Lyophilized from 1X PBS with 2% Trehalose
UniProt	Q8IZU3
Localization	Nuclear
Applications	Western Blot : 1-2ug/ml Immunohistochemistry (FFPE) : 2-5ug/ml Immunofluorescence (FFPE) : 5ug/ml Flow Cytometry : 1-3ug/million cells Direct ELISA : 0.1-0.5ug/ml
Limitations	This Synaptonemal Complex Protein 3 antibody is available for research use only.



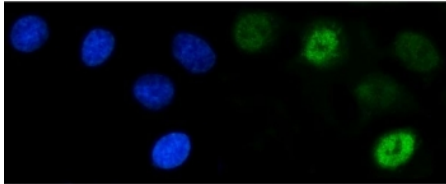
IHC staining of FFPE human testicular cancer tissue with Synaptonemal Complex Protein 3 antibody. HIER: boil tissue sections in pH8 EDTA for 20 min and allow to cool before testing.



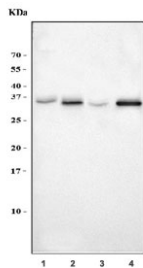
IHC staining of FFPE human gall bladder adenosquamous carcinoma tissue with Synaptonemal Complex Protein 3 antibody. HIER: boil tissue sections in pH8 EDTA for 20 min and allow to cool before testing.



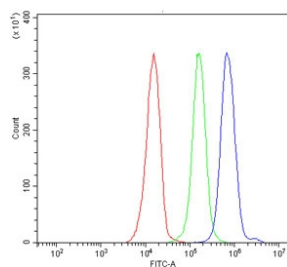
IHC staining of FFPE human placental tissue with Synaptonemal Complex Protein 3 antibody. HIER: boil tissue sections in pH8 EDTA for 20 min and allow to cool before testing.



Immunofluorescent staining of FFPE human A549 cells with Synaptonemal Complex Protein 3 antibody (green) and DAPI nuclear stain (blue). HIER: steam section in pH6 citrate buffer for 20 min.



Western blot testing of 1) human HepG2, 2) rat testis, 3) rat C6 and 4) mouse testis tissue lysate with Synaptonemal Complex Protein 3 antibody. Expected molecular weight: 28-34 kDa.



Flow cytometry testing of human JK-1 cells with Synaptonemal Complex Protein 3 antibody at 1ug/million cells (blocked with goat sera); Red=cells alone, Green=isotype control, Blue= Synaptonemal Complex Protein 3 antibody.

Description

SYCP3, also known as COR1 or SCP3, is a protein that in humans is encoded by the SYCP3 gene. It is mapped to 12q23.2. This gene encodes an essential structural component of the synaptonemal complex. This complex is involved in synapsis, recombination and segregation of meiotic chromosomes. Mutations in this gene are associated with azoospermia in males and susceptibility to pregnancy loss in females. Alternate splicing results in multiple transcript variants that encode the same protein. SYCP3 has an essential meiotic function in human spermatogenesis that is compromised by the mutant protein by dominant-negative interference. SYCP3 is linked to inherited aneuploidy in female germ cells and provides a model system for studying age-dependent degeneration in oocytes.

Application Notes

Optimal dilution of the Synaptonemal Complex Protein 3 antibody should be determined by the researcher.

Immunogen

Recombinant human protein (amino acids E75-F236) was used as the immunogen for the Synaptonemal Complex Protein 3 antibody.

Storage

After reconstitution, the Synaptonemal Complex Protein 3 antibody can be stored for up to one month at 4oC. For long-term, aliquot and store at -20oC. Avoid repeated freezing and thawing.