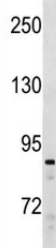


## SUZ12 Antibody / Suppressor of zeste 12 protein homolog (F52128)

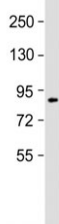
Catalog No.	Formulation	Size
F52128-0.4ML	In 1X PBS, pH 7.4, with 0.09% sodium azide	0.4 ml
F52128-0.08ML	In 1X PBS, pH 7.4, with 0.09% sodium azide	0.08 ml

**Bulk quote request**

<b>Availability</b>	1-3 business days
<b>Species Reactivity</b>	Human, Mouse
<b>Format</b>	Antigen affinity purified
<b>Clonality</b>	Polyclonal (rabbit origin)
<b>Isotype</b>	Rabbit Ig
<b>Purity</b>	Antigen affinity
<b>UniProt</b>	Q15022
<b>Applications</b>	Western Blot : 1:1000
<b>Limitations</b>	This SUZ12 antibody is available for research use only.



SUZ12 antibody western blot analysis in human Ramos cell lysate. Observed molecular weight 83~95 kDa.



SUZ12 antibody western blot analysis in mouse F9 cell lysate. Observed molecular weight 83~95 kDa.

## Description

Polycomb group (PcG) protein. Component of the PRC2/EED-EZH2 complex, which methylates 'Lys-9' (H3K9me) and 'Lys-27' (H3K27me) of histone H3, leading to transcriptional repression of the affected target gene. The PRC2/EED-EZH2 complex may also serve as a recruiting platform for DNA methyltransferases, thereby linking two epigenetic repression systems. Genes repressed by the PRC2/EED-EZH2 complex include HOXC8, HOXA9, MYT1 and CDKN2A.

## Application Notes

Titration of the SUZ12 antibody may be required due to differences in protocols and secondary/substrate sensitivity.

## Immunogen

A portion of amino acids 559-588 from the human protein was used as the immunogen for this SUZ12 antibody.

## Storage

Aliquot the SUZ12 antibody and store frozen at -20oC or colder. Avoid repeated freeze-thaw cycles.