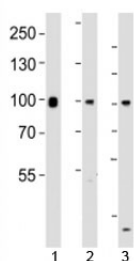


Suz12 Antibody (F53082)

Catalog No.	Formulation	Size
F53082-0.4ML	In 1X PBS, pH 7.4, with 0.09% sodium azide	0.4 ml
F53082-0.08ML	In 1X PBS, pH 7.4, with 0.09% sodium azide	0.08 ml

[Bulk quote request](#)

Availability	1-3 business days
Species Reactivity	Mouse
Predicted Reactivity	Human
Format	Antigen affinity purified
Clonality	Polyclonal (rabbit origin)
Isotype	Rabbit Ig
Purity	Antigen affinity
UniProt	Q80U70
Applications	Western Blot : 1:1000
Limitations	This Suz12 antibody is available for research use only.



Western blot testing of Suz12 antibody at 1:1000 dilution. Lane 1: mouse F9 lysate; 2: human HeLa lysate; 3: human MCF-7 lysate; Observed molecular weight 83~95 kDa.

Description

Polycomb group (PcG) protein. Component of the PRC2/EED- EZH2 complex, which methylates 'Lys-9' (H3K9me) and 'Lys-27' (H3K27me) of histone H3, leading to transcriptional repression of the affected target gene. The PRC2/EED-EZH2 complex may also serve as a recruiting platform for DNA methyltransferases, thereby linking two epigenetic repression systems (By similarity). Genes repressed by the PRC2/EED-EZH2 complex include HOXA7, HOXB6 and HOXC8.

Application Notes

Titration of the Suz12 antibody may be required due to differences in protocols and secondary/substrate sensitivity.

Immunogen

This Suz12 antibody was produced from a rabbit immunized with a KLH conjugated synthetic peptide between 496-530 amino acids from the mouse protein.

Storage

Aliquot the Suz12 antibody and store frozen at -20oC or colder. Avoid repeated freeze-thaw cycles.