

Surfactant Protein A Antibody (R30530)

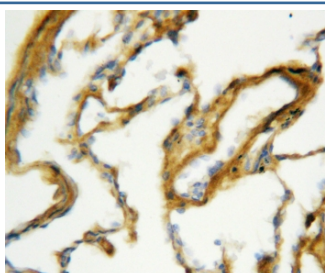
Catalog No.	Formulation	Size
R30530	0.5mg/ml if reconstituted with 0.2ml sterile DI water	100 ug

Bulk quote request

Availability	1-3 business days
Species Reactivity	Mouse, Rat
Format	Antigen affinity purified
Clonality	Polyclonal (rabbit origin)
Isotype	Rabbit IgG
Purity	Antigen affinity
Buffer	Lyophilized from 1X PBS with 2.5% BSA and 0.025% sodium azide/thimerosal
UniProt	P35242
Applications	Western Blot : 0.5-1ug/ml IHC (FFPE) : 0.5-1ug/ml
Limitations	This Surfactant Protein A antibody is available for research use only.



Western blot testing of Surfactant protein A antibody and Lane 1: mouse lung; 2: rat lung tissue lysate. Predicted molecular weight: ~26 kDa but may be observed at higher molecular weights due to glycosylation.



IHC-P: Surfactant protein A antibody testing of rat lung tissue. HIER: steamed with pH6 citrate buffer.

Description

Surfactant protein A is an innate immune system collectin. The gene encoding SP-A map to mouse chromosome 14. Surfactant protein-A, which plays a role in innate host defense in the lung, is also expressed in the Eustachian tube. We report that the frequency of specific surfactant protein-A haplotypes and genotypes differs between children with recurrent otitis media compared with a control population.

Application Notes

The stated application concentrations are suggested starting amounts. Titration of the Surfactant Protein A antibody may be required due to differences in protocols and secondary/substrate sensitivity.

Immunogen

An amino acid sequence from the C-terminus of mouse Surfactant Protein A (WNDKGCLQYRLAICEF) was used as the immunogen for this Surfactant Protein A antibody (100% rat homology).

Storage

After reconstitution, the Surfactant Protein A antibody can be stored for up to one month at 4oC. For long-term, aliquot and store at -20oC. Avoid repeated freezing and thawing.