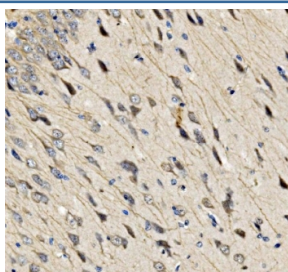


Sur8 Antibody / Shoc2 (RQ7990)

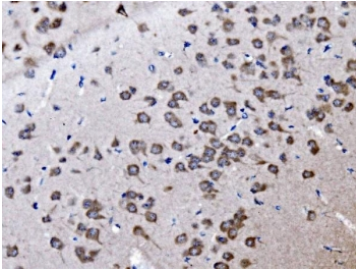
Catalog No.	Formulation	Size
RQ7990	0.5mg/ml if reconstituted with 0.2ml sterile DI water	100 ug

Bulk quote request

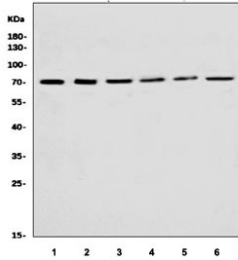
Availability	1-3 business days
Species Reactivity	Human, Mouse, Rat
Format	Antigen affinity purified
Clonality	Polyclonal (rabbit origin)
Isotype	Rabbit IgG
Purity	Antigen affinity purified
Buffer	Lyophilized from 1X PBS with 2% Trehalose
UniProt	Q9UQ13
Localization	Cytoplasmic, nuclear
Applications	Western Blot : 0.5-1ug/ml Immunohistochemistry (FFPE) : 2-5ug/ml Flow Cytometry : 1-3ug/million cells Direct ELISA : 0.1-0.5ug/ml
Limitations	This Sur8 antibody is available for research use only.



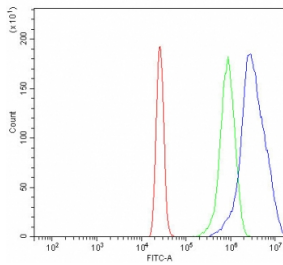
IHC staining of FFPE rat brain tissue with Sur8 antibody. HIER: boil tissue sections in pH8 EDTA for 20 min and allow to cool before testing.



IHC staining of FFPE mouse brain tissue with Sur8 antibody. HIER: boil tissue sections in pH8 EDTA for 20 min and allow to cool before testing.



Western blot testing of human 1) MCF7, 2) Jurkat, 3) HepG2, 4) U-2 OS, 5) T-47D and 6) Raji cell lysate with Sur8 antibody. Predicted molecular weight ~65 kDa, 60 kDa (two isoforms).



Flow cytometry testing of human HL60 cells with Sur8 antibody at 1ug/million cells (blocked with goat sera); Red=cells alone, Green=isotype control, Blue= Sur8 antibody.

Description

Leucine-rich repeat protein SHOC-2 is a protein that in humans is encoded by the SHOC2 gene. This gene encodes a protein that consists almost entirely of leucine-rich repeats, a domain implicated in protein-protein interactions. The protein may function as a scaffold linking RAS to downstream signal transducers in the RAS/ERK MAP kinase signaling cascade. Mutations in this gene have been associated with Noonan-like syndrome with loose anagen hair.

Application Notes

Optimal dilution of the Sur8 antibody should be determined by the researcher.

Immunogen

E. coli-derived recombinant human protein (amino acids I119-K542) was used as the immunogen for the Sur8 antibody.

Storage

After reconstitution, the Sur8 antibody can be stored for up to one month at 4°C. For long-term, aliquot and store at -20°C. Avoid repeated freezing and thawing.

