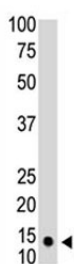


SUMO1 Antibody [clone 66AT1320] (F40204)

| Catalog No. | Formulation | Size |
|---------------|--|---------|
| F40204-0.4ML | In 1X PBS, pH 7.4, with 0.09% sodium azide | 0.4 ml |
| F40204-0.08ML | In 1X PBS, pH 7.4, with 0.09% sodium azide | 0.08 ml |

[Bulk quote request](#)

| | |
|---------------------------|---|
| Availability | 1-3 business days |
| Species Reactivity | Human |
| Format | Purified |
| Clonality | Monoclonal (mouse origin) |
| Isotype | Mouse IgG1 |
| Clone Name | 66AT1320 |
| Purity | Purified |
| UniProt | P63165 |
| Applications | Western Blot : 1:100-1:500 |
| Limitations | This SUMO1 antibody is available for research use only. |



The SUMO1 antibody used in western blot to detect SUMO1 in HL-60 cell lysate.
Predicted molecular weight: 12-15 kDa

Description

This gene encodes a protein that is a member of the SUMO (small ubiquitin-like modifier) protein family. It functions in a manner similar to ubiquitin in that it is bound to target proteins as part of a post-translational modification system. However, unlike ubiquitin which targets proteins for degradation, this protein is involved in a variety of cellular processes, such as nuclear transport, transcriptional regulation, apoptosis, and protein stability. It is not active until the last four amino acids of the carboxy-terminus have been cleaved off. Several pseudogenes have been reported for this gene. Alternate transcriptional splice variants encoding different isoforms have been characterized.

Application Notes

Titration of the SUMO1 antibody may be required due to differences in protocols and secondary/substrate sensitivity.

Immunogen

Purified recombinant protein was used as immunogen for this SUMO1 antibody.

Storage

Aliquot the SUMO1 antibody and store frozen at -20oC or colder. Avoid repeated freeze-thaw cycles.