

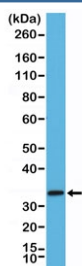
STX1A Antibody / Syntaxin 1A [clone RM367] (R20386)

Catalog No.	Formulation	Size
R20386-0.1ML	Antibody in PBS with 50% glycerol, 1% BSA and 0.09% sodium azide	100 ul

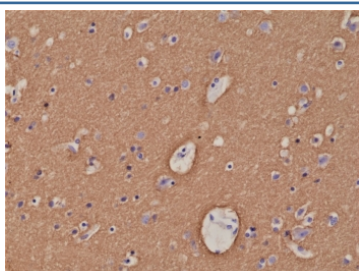
Recombinant **RABBIT MONOCLONAL**

[Bulk quote request](#)

Availability	1-3 business days
Species Reactivity	Human, Mouse, Rat
Format	Purified
Clonality	Recombinant Rabbit Monoclonal
Isotype	Rabbit IgG
Clone Name	RM367
Purity	Protein A purified from animal origin-free supernatant
UniProt	Q16623
Applications	Immunohistochemistry (FFPE) : 1:500-1:1000 Western Blot : 1:1000-1:2000
Limitations	This recombinant STX1A antibody is available for research use only.



Western blot testing of mouse brain tissue lysate using recombinant STX1A antibody at 1:2000 dilution. Expected molecular weight ~35 kDa.



IHC staining of FFPE human brain tissue with recombinant STX1A antibody at 1:1000.

Description

This antibody reacts to human, mouse, and rat Syntaxin-1A.

Application Notes

The stated application concentrations are suggested starting points. Titration of the recombinant STX1A antibody may be required due to differences in protocols and secondary/substrate sensitivity.

Immunogen

A peptide corresponding to residues near the N-terminus of human Syntaxin-1A was used as the immunogen for the STX1A antibody.

Storage

Store the recombinant STX1A antibody at -20oC.