

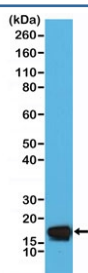
## STMN1 Antibody / Stathmin [clone RM350] (R20372)

Catalog No.	Formulation	Size
R20372-0.1ML	Antibody in PBS with 50% glycerol, 1% BSA and 0.09% sodium azide	100 ul

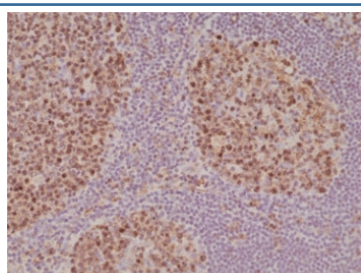
Recombinant **RABBIT MONOCLONAL**

[Bulk quote request](#)

Availability	1-3 business days
Species Reactivity	Human
Format	Purified
Clonality	Recombinant Rabbit Monoclonal
Isotype	Rabbit IgG
Clone Name	RM350
Purity	Protein A purified from animal origin-free supernatant
UniProt	P16949
Localization	Cytoplasmic
Applications	Immunohistochemistry (FFPE) : 1:500-1:1000 Western Blot : 1:2000-1:5000
Limitations	This recombinant STMN1 antibody is available for research use only.



Western blot testing of human HeLa cell lysate with recombinant STMN1 antibody at 1:5000 dilution. Expected molecular weight ~17 kDa.



IHC staining of FFPE human tonsil tissue with recombinant STMN1 antibody at 1:1000.

## Description

This antibody reacts to human Stathmin.

## Application Notes

The stated application concentrations are suggested starting points. Titration of the recombinant STMN1 antibody may be required due to differences in protocols and secondary/substrate sensitivity.

## Immunogen

A peptide corresponding to the C-terminus of human Stathmin was used as the immunogen for the recombinant STMN1 antibody.

## Storage

Store the recombinant STMN1 antibody at -20oC.