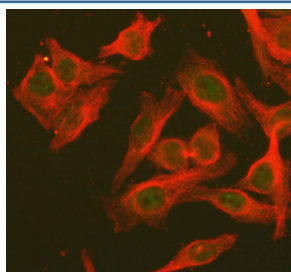


STAT6 Antibody (R30776)

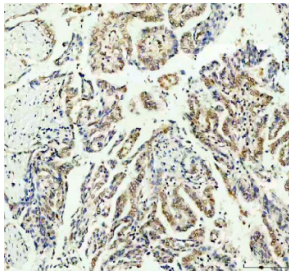
Catalog No.	Formulation	Size
R30776	0.5mg/ml if reconstituted with 0.2ml sterile DI water	100 ug

Bulk quote request

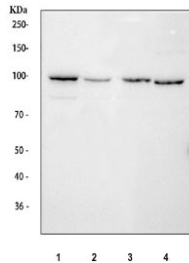
Availability	1-3 business days
Species Reactivity	Human, Mouse, Rat
Format	Antigen affinity purified
Clonality	Polyclonal (rabbit origin)
Isotype	Rabbit IgG
Purity	Antigen affinity
Buffer	Lyophilized from 1X PBS with 2% Trehalose
UniProt	P42226
Localization	Cytoplasm, nucleus
Applications	Western Blot : 0.5-1ug/ml Immunohistochemistry (FFPE) : 2-5ug/ml Immunofluorescence : 5ug/ml Flow Cytometry : 1-3ug/million cells
Limitations	This STAT6 antibody is available for research use only.



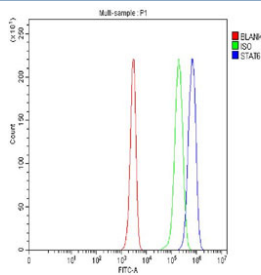
Immunofluorescent staining of FFPE human HeLa cells with STAT6 antibody (green) and Tubulin alpha mAb (red). HIER: steam section in pH6 citrate buffer for 20 min.



IHC staining of FFPE human lung cancer tissue with STAT6 antibody. HIER: boil tissue sections in pH8 EDTA for 20 min and allow to cool before testing.



Western blot testing of 1) human HeLa, 2) human HepG2, 3) mouse thymus and 4) mouse NIH 3T3 cell lysate with STAT6 antibody. Predicted molecular weight ~94 kDa.



Flow cytometry testing of fixed and permeabilized human Jurkat cells with STAT6 antibody at 1ug/million cells (blocked with goat sera); Red=cells alone, Green=isotype control, Blue= STAT6 antibody.

Description

The protein encoded by the STAT6 gene is a member of the STAT family of transcription factors. The gene spans 19 kb and contains 23 exons. In response to cytokines and growth factors, STAT family members are phosphorylated by the receptor associated kinases, and then form homo- or heterodimers that translocate to the cell nucleus where they act as transcription activators. STAT6 plays a central role in exerting IL4 mediated biological responses. It is found to induce the expression of BCL2L1/BCL-X(L), which is responsible for the anti-apoptotic activity of IL4. Knockout studies in mice suggested the roles of this gene in differentiation of T helper 2(Th2), expression of cell surface markers, and class switch of immunoglobulins.

Application Notes

The stated application concentrations are suggested starting amounts. Titration of the STAT6 antibody may be required due to differences in protocols and secondary/substrate sensitivity.

Immunogen

An amino acid sequence from the N-terminus of human STAT6 (EKVQRLYVDFPQHLRHL) was used as the immunogen for this STAT6 antibody.

Storage

After reconstitution, the STAT6 antibody can be stored for up to one month at 4oC. For long-term, aliquot and store at -20oC. Avoid repeated freezing and thawing.

