

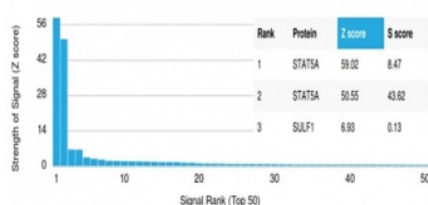
## STAT5A Antibody [clone PCRP-STAT5A-1A11] (V9237)

Catalog No.	Formulation	Size
V9237-100UG	0.2 mg/ml in 1X PBS with 0.1 mg/ml BSA (US sourced), 0.05% sodium azide	100 ug
V9237-20UG	0.2 mg/ml in 1X PBS with 0.1 mg/ml BSA (US sourced), 0.05% sodium azide	20 ug
V9237SAF-100UG	1 mg/ml in 1X PBS; BSA free, sodium azide free	100 ug

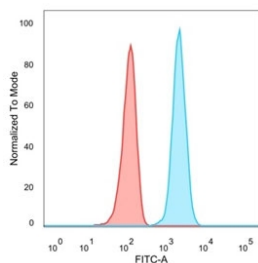
[Bulk quote request](#)

<b>Availability</b>	1-3 business days
<b>Species Reactivity</b>	Human
<b>Format</b>	Purified
<b>Clonality</b>	Monoclonal (mouse origin)
<b>Isotype</b>	Mouse IgG1
<b>Clone Name</b>	PCRP-STAT5A-1A11
<b>Purity</b>	Protein A/G affinity
<b>UniProt</b>	P42229
<b>Localization</b>	Cytoplasm, Nucleus
<b>Applications</b>	Flow Cytometry : 1-2ug/million cells
<b>Limitations</b>	This STAT5A antibody is available for research use only.

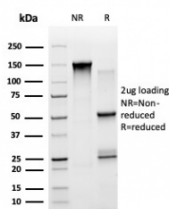
Human Protein Microarray Specificity Validation



Analysis of HuProt(TM) microarray containing more than 19,000 full-length human proteins using STAT5A antibody (clone PCRP-STAT5A-1A11). These results demonstrate the foremost specificity of the PCRP-STAT5A-1A11 mAb. Z- and S- score: The Z-score represents the strength of a signal that an antibody (in combination with a fluorescently-tagged anti-IgG secondary Ab) produces when binding to a particular protein on the HuProt(TM) array. Z-scores are described in units of standard deviations (SD&#39;s) above the mean value of all signals generated on that array. If the targets on the HuProt(TM) are arranged in descending order of the Z-score, the S-score is the difference (also in units of SD&#39;s) between the Z-scores. The S-score therefore represents the relative target specificity of an Ab to its intended target.



FACS staining of PFA-fixed human HeLa cells with STAT5A antibody (blue, clone PCRP-STAT5A-1A11) and isotype control (red).



SDS-PAGE analysis of purified, BSA-free STAT5A antibody (PCRP-STAT5A-1A11) as confirmation of integrity and purity.

## Description

Signal transducer and activator of transcription 5A (Stat5a) and Stat5b, which share 96% homology, undergo receptor tyrosine kinase or G protein-coupled receptor-dependent phosphorylation in response to cytokines or growth factors, and then form homo- or heterodimers that translocate to the nucleus, where they initiate transcription. Activation of Stat5a via IL-2, IL-3, IL-7/ GM-CSF, erythropoietin, thrombopoietin and growth hormones influences proliferation, differentiation and apoptosis in lymphohematopoietic cells. Phosphorylation of Stat5a at Ser127/Ser128 and Ser779 are contingent on ErbB-4- mediated activation of Stat5a. Activation of Stat5b via IL-2, IL-4, CSF-1 and growth hormones influences TCR signaling, apoptosis, adult mammary gland development and sexual dimorphism of liver gene expression. Stat5b is the major liver-expressed Stat5 form that has been shown to fuse with the retinoic acid receptor a gene in acute promyelocytic leukemias (APLL). Stat5a/b null mice have severely impaired lymphoid development and differentiation.

## Application Notes

Optimal dilution of the STAT5A antibody should be determined by the researcher.

## Immunogen

STAT5A protein was used as the immunogen for the STAT5A antibody.

## Storage

Aliquot the STAT5A antibody and store frozen at -20oC or colder. Avoid repeated freeze-thaw cycles.